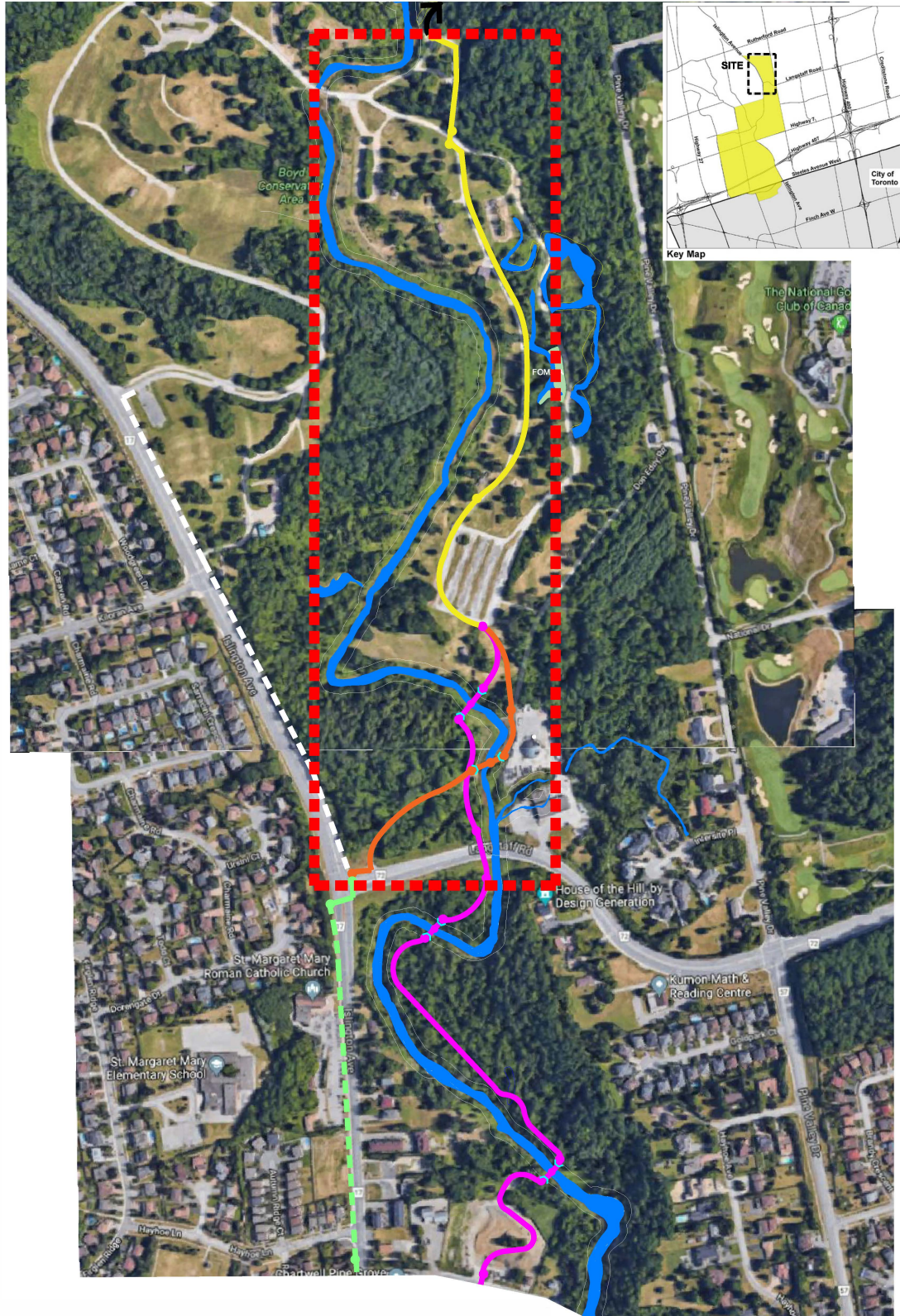


PHASING PLAN

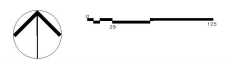
 Phase 1 (0-5 yrs)

 FIXED TRAIL ALIGNMENT
1400m



CITY OF VAUGHAN - HUMBER TRAIL
FEASIBILITY STUDY

BOYD CONSERVATION AREA TO STEELES AVENUE WEST
SEGMENT 1: PINE GROVE RD. - BOYD CONSERVATION AREA



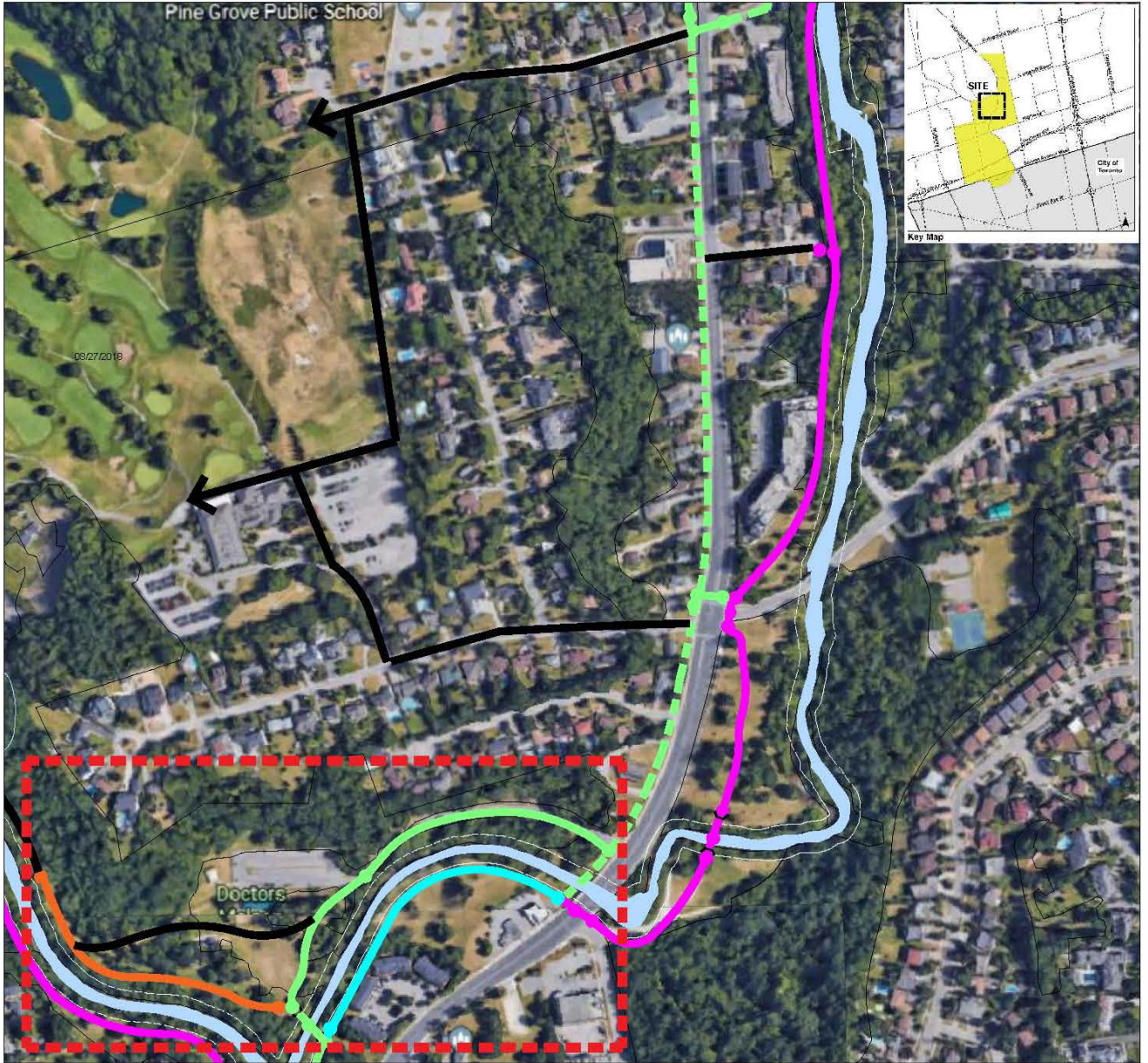


Phase 1 (0-5 yrs)

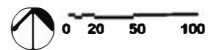
TRAIL ALIGNMENT OPTION 1 442M

POTENTIAL FUTURE TRAIL LINK

TRAIL ALIGNMENT OPTION 3 300M



CITY OF VAUGHAN - HUMBER TRAIL
FEASIBILITY STUDY

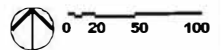
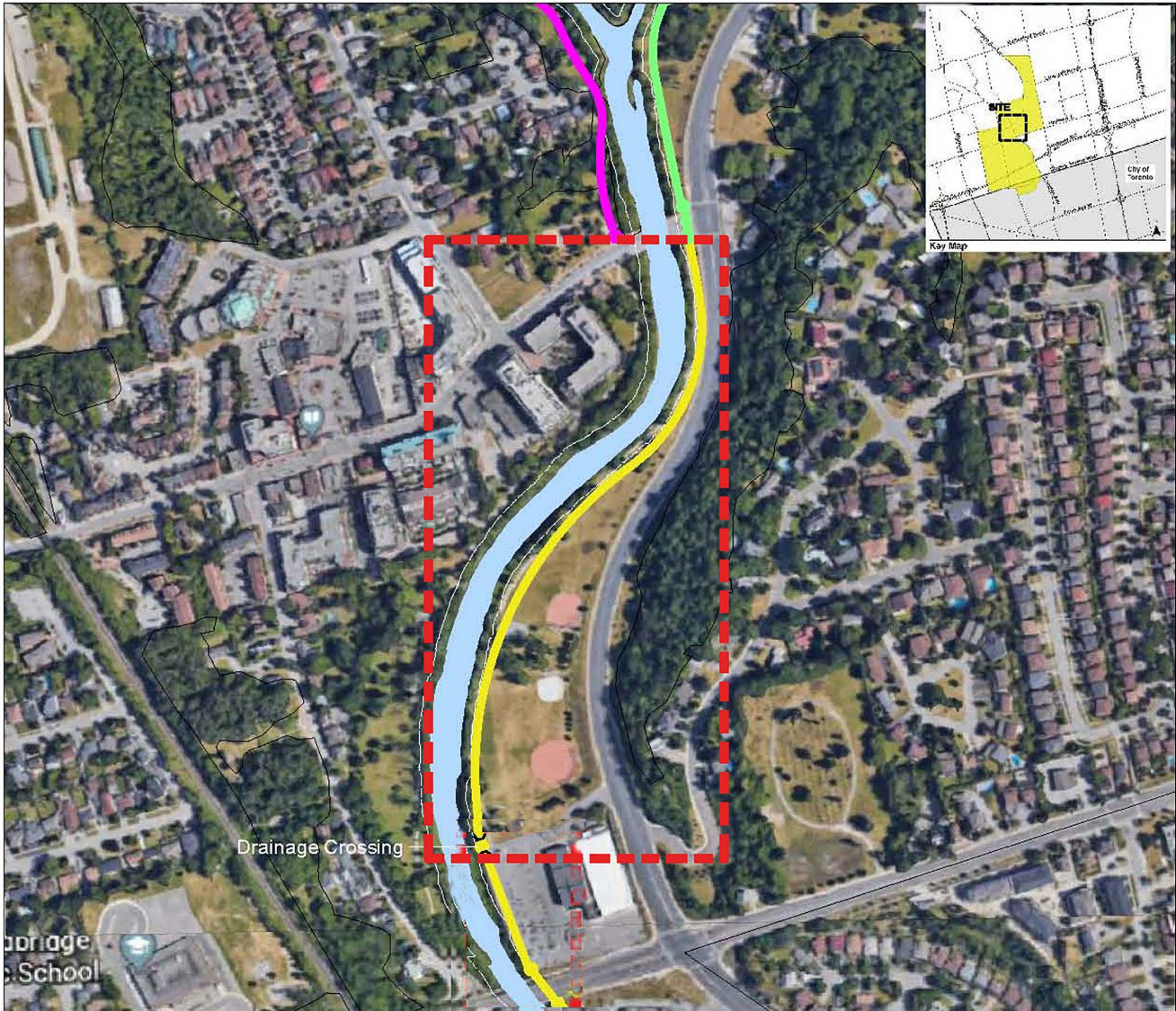


BOYD CONSERVATION AREA TO STEELES AVENUE WEST
SEGMENT 2: THISTLEWOOD AVE. - PINE GROVE RD.



Phase 1 (0-5 yrs)

FIXED TRAIL ALIGNMENT 635M (INCLUDES DRAINAGE CROSSING)



**CITY OF VAUGHAN - HUMBER TRAIL
FEASIBILITY STUDY**

BOYD CONSERVATION AREA TO STEELES AVENUE WEST
SEGMENT 3: HIGHWAY 7 - THISTLEWOOD AVE.

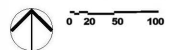


Phase 1 (0-5 yrs)

FIXED TRAIL ALIGNMENT 155M





CITY OF VAUGHAN - HUMBER TRAIL FEASIBILITY STUDY

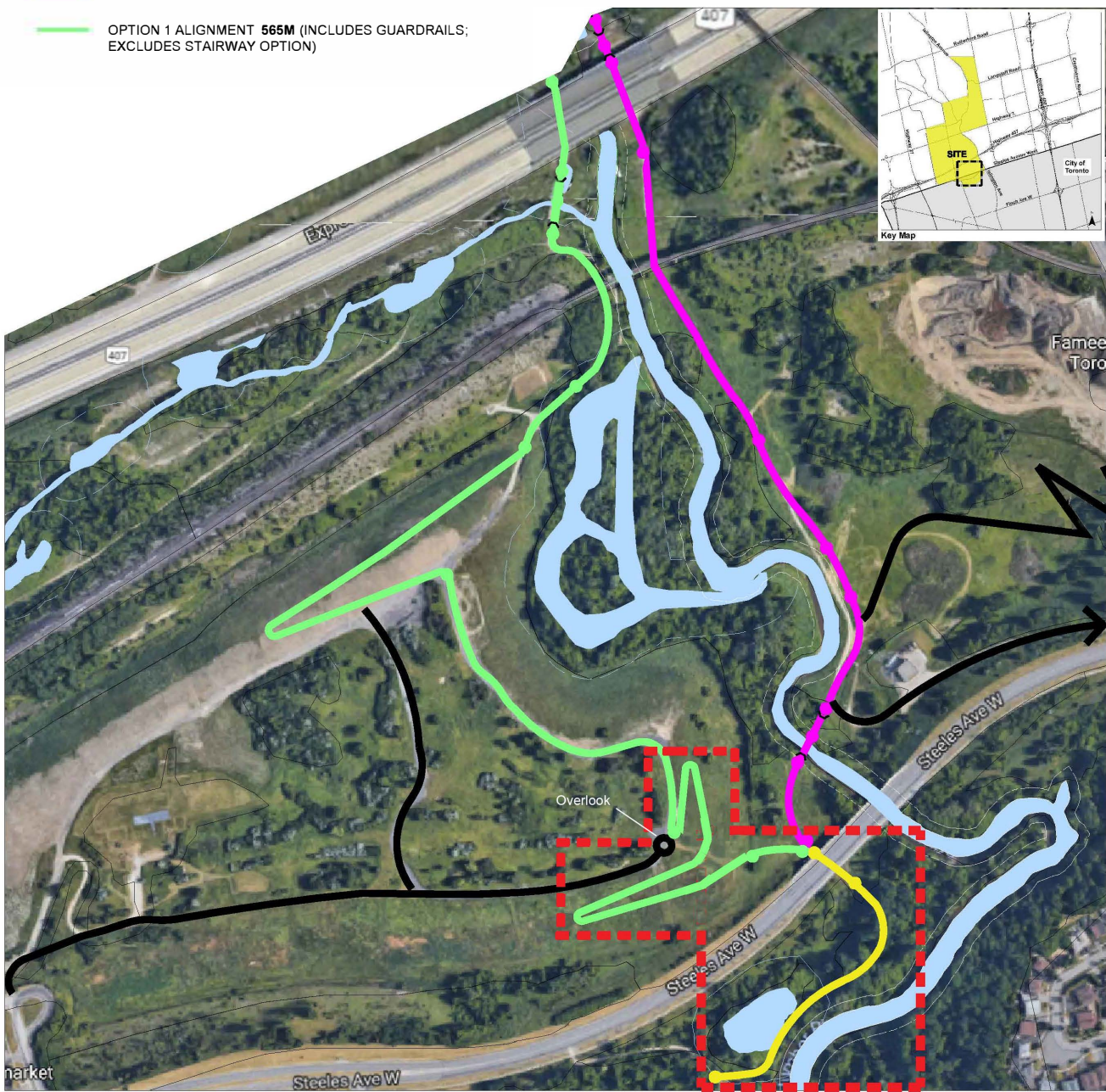


BOYD CONSERVATION AREA TO STEELES AVENUE WEST
SEGMENT 4 : HIGHWAY 407 TO HIGHWAY 7

 Phase 1 (0-5 yrs)

 FIXED TRAIL ALIGNMENT 345M (INCLUDES CULVERTS AND GUARD RAIL)

 OPTION 1 ALIGNMENT 565M (INCLUDES GUARDRAILS;
EXCLUDES STAIRWAY OPTION)



**CITY OF VAUGHAN - HUMBER TRAIL
FEASIBILITY STUDY**

**BOYD CONSERVATION AREA TO STEELES AVENUE WEST
SEGMENT 5 : STEELES AVE. WEST TO HIGHWAY 407**