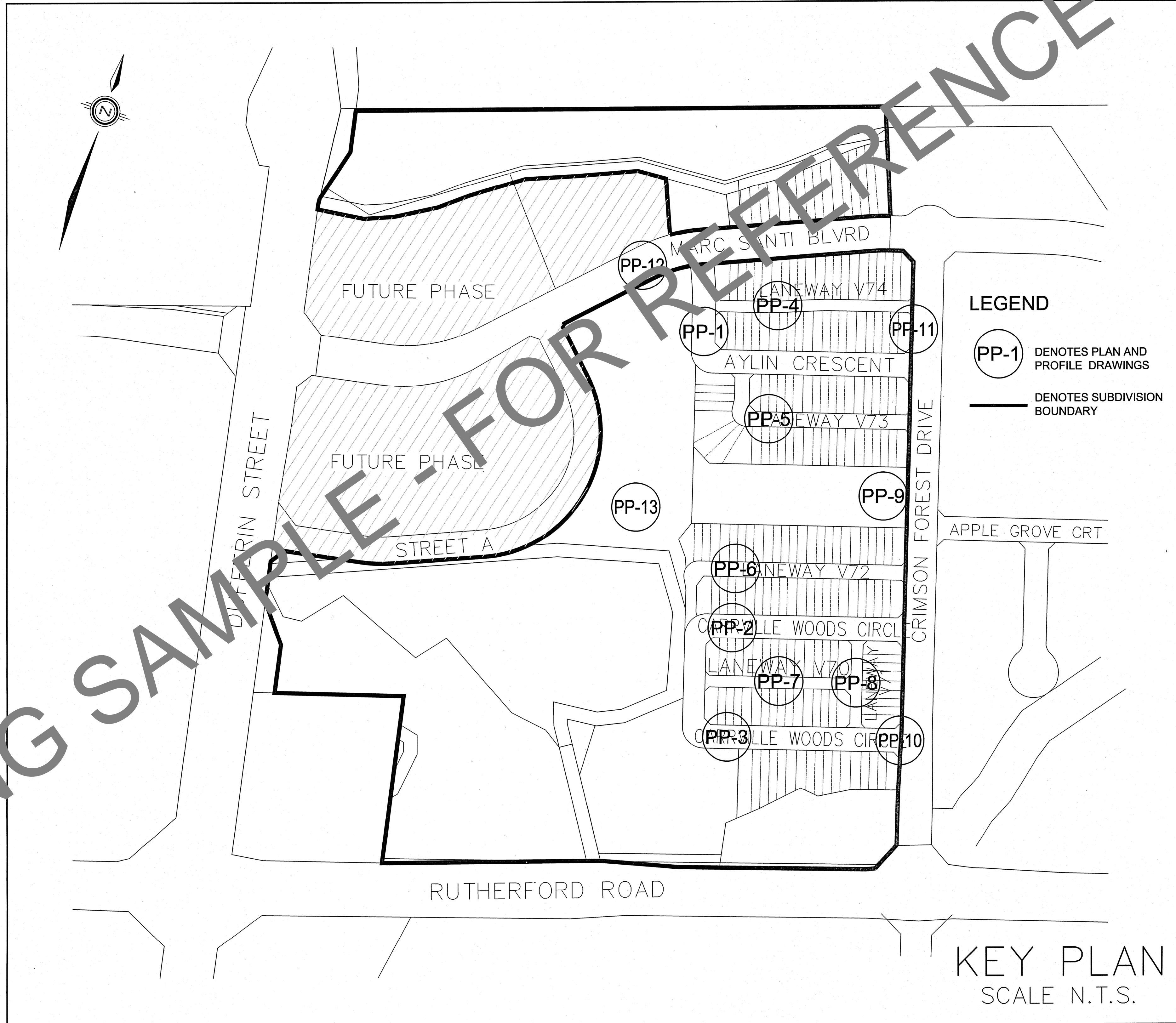


NINE-TEN WEST LIMITED CARRVILLE DISTRICT CENTER - PHASE 1 BLOCK 11

DRAWING SAMPLE - FOR REFERENCE ONLY

Dwg No.	DESCRIPTION
GN-1	GENERAL NOTES AND EXCEPTIONS
GENERAL PLANS	
GP-1	GENERAL PLAN
STM-1	STORM TRIBUTARY AREAS
SAN-1	SANITARY TRIBUTARY AREAS
GRADING PLANS	
GR-1	GRADING PLAN - PART 1
GR-2	GRADING PLAN - PART 2
PLANS AND PROFILES	
PP-1	AYLIN CRESCENT (STA. 0+000.000 TO STA. 0+246.230)
PP-2	CARRVILLE WOODS CIRCLE (STA. 0+000.000 TO STA. 0+185.000)
PP-3	CARRVILLE WOODS CIRCLE (STA. 0+185.000 TO STA. 0+400.840)
PP-4	LANEWAY V74 (STA. 0+000.000 TO STA. 0+175.840)
PP-5	LANEWAY V73 (STA. 0+000.000 TO STA. 0+175.840)
PP-6	LANEWAY V72 (STA. 0+000.000 TO STA. 0+217.790)
PP-7	LANEWAY V70 (STA. 0+000.000 TO STA. 0+119.950)
PP-8	LANEWAY V71 (STA. 0+000.000 TO STA. 0+080.500)
PP-9	STORM EASEMENTS (STA. 0+060.000 TO STA. 0+260.000)
PP-10	CRIMSON FOREST DRIVE (STA. 0+300.000 TO STA. 0+300.000)
PP-11	CRIMSON FOREST DRIVE (STA. 0+300.000 TO STA. 0+422.748)
PP-12	MARC SANTI BOULEVARD (STA. 1+500.000 TO STA. 1+700.000)
PP-13	SANITARY SEWER THROUGH PARK (STA. 0+000.000 TO STA. 0+160.000)
CROSS SECTIONS	
SEC-1	SECTIONS 1 TO 9
SEC-2	SECTIONS 10 TO 19
SEC-3	SECTIONS 20 TO 24
UTILITY COORDINATION PLANS	
UT-1	UTILITY COORDINATION PLAN - PART 1
UT-2	UTILITY COORDINATION PLAN - PART 2
TRAFFIC MANAGEMENT PLANS	
TM-1	TRAFFIC MANAGEMENT PLAN - PART 1
TM-2	TRAFFIC MANAGEMENT PLAN - PART 2
DESIGN SHEETS	
DS-1	STORM SEWER DESIGN SHEETS
DS-2	SANITARY SEWER DESIGN SHEETS
DETAILS	
D-1	CITY OF VAUGHAN STANDARD DRAWINGS
D-2	CITY OF VAUGHAN STANDARD DRAWINGS
D-3	CITY OF VAUGHAN STANDARD DRAWINGS
D-4	CITY OF VAUGHAN STANDARD DRAWINGS
D-5	OPSD STANDARD DRAWINGS
D-6	OPSD STANDARD DRAWINGS
SILTATION CONTROL	
SC-1	SILTATION CONTROL PLAN TOPSOIL STRIPPING OPERATION
SC-2	SILTATION CONTROL PLAN TEMPORARY PONDS 1 AND 2
SC-3	SILTATION CONTROL PLAN ACCESS ROAD AND DETAILS
SC-4	SILTATION CONTROL PLAN DURING CONSTRUCTION OF SERVICES
TRAFFIC CONTROL	
TC-1	TRAFFIC CONTROL PLAN CRIMSON FOREST DRIVE
TC-2	TRAFFIC CONTROL PLAN CRIMSON FOREST DRIVE
TC-3	DETOUR PLAN FOR CLOSURE OF MARC SANTI BOULEVARD
ELECTRICAL DRAWINGS	
101	TITLE PAGE/KEY MAP/NOTES
201	E.D.S. GEOGRAPHIC SCHEMATIC
202	E.D.S. SINGLE LINE SCHEMATIC
301	E.D.S. DESIGN DRAWINGS 1
302	E.D.S. DESIGN DRAWINGS 2
401	E.D.S. STANDARDS/DETAILS
402	E.D.S. R.O.W.'s
501	S.L. STANDARDS/DETAILS
SL-1	PARK WALKWAY LIGHTING LAYOUT
DT-1	PARK WALKWAY LIGHTING DETAIL SHEET
LANDSCAPE	
PLANS	
L1	STREETSCAPE PLAN
L2	STREETSCAPE PLAN
L3	STREETSCAPE PLAN
L4	STREETSCAPE PLAN
LE1	ENLARGEMENT PLAN-PLAZA PAVING
DETAILS	
LD1	DETAILS
LD2	DETAILS
LD3	DETAILS
LD4	DETAILS
LE-01	DETAILS-PLAZA PAVING



OWNER

NINE-TEN WEST LTD.
c/o THE REMINGTON GROUP
7501 KEELE STREET, SUITE 100
VAUGHAN, ONTARIO
L4K 1K2

CONSULTANT

SCHAEFFERS
CONSULTING ENGINEERS

SCHAEFFER & ASSOCIATES LTD.

6 Ronrose Drive, Concord,
Ontario, L4K 4R3
Tel: (905) 738-6100
Fax: (905) 738-6875
E-mail:
design@schaeffers.com

MUNICIPALITY

VAUGHAN

REGION

York Region

Transportation and Works

PROJECT No.

2014-4025

19T-12V009