

NOTICE OF PUBLIC INFORMATION CENTRE #2 **ENVIRONMENTAL ASSESSMENT STUDY**



Portage Parkway Widening and Easterly Extension to Creditstone Road **Part A: Portage Parkway Widening from Applewood Crescent to Jane Street and** **Part B: Portage Parkway Extension from Jane Street to Creditstone Road**

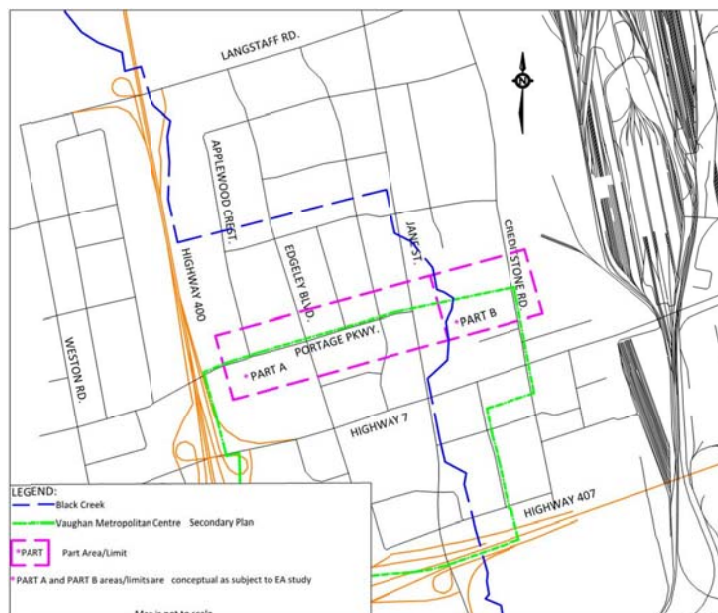
THE STUDY

The City of Vaughan Transportation Master Plan (TMP) – A New Path (2013) – identified the need to widen Portage Parkway from Applewood Crescent to Jane Street and extend Portage Parkway from Jane Street to Creditstone Road) as a strategic network improvement and in support of development in the Vaughan Metropolitan Centre.

THE PROCESS

The TMP – A New Path, having completed Phases 1 and 2 of the Municipal Class Environmental Assessment (EA) process, has identified projects which will improve connections to local and regional infrastructure, provide access to future developments, support transit-oriented nodes and corridors, and enhance transit ridership, cycling and walking.

The TMP identified the need to widen Portage Parkway to four lanes from Applewood Crescent to Jane Street and establish a new four lane road from Jane Street to Creditstone Road and recommended the project be carried forward to Phases 3 and 4 of the Class EA process.



The City is completing the Class EA Study, which establishes the preferred design for the widening, extension and improvements for:

- PART A*: Portage Parkway Widening from Applewood Crescent to the west side of the Black Creek
- PART B*: Portage Parkway Extension from the west side of the Black Creek, crossing the Black Creek channel, to Creditstone Road

The Study considers the technical, environmental, socio-economic and financial criteria as the basis for the assessment. The Study, proceeding in two interrelated parts, is being undertaken in accordance with "Schedule C" of the Municipal Engineers Association Municipal Class Environmental Assessment (October 2000, as amended in 2007 & 2011). Separate Environmental Study Reports (ESRs) for Part A and B, the limits of which are undergoing refinement through the process, will be prepared and available for public review and notices issued upon study completion.

PUBLIC CONSULTATION – YOU ARE INVITED

Consultation with interested stakeholders (public and agencies) is a key component of the study. The first of two Public Information Centres (PICs) for the study was held on November 25, 2015 to present the alternative planning solutions, future conditions, evaluation criteria and design considerations. With consideration for public input, the preferred solution was selected as a combination of alternatives:

- Travel Demand Management Initiatives being implemented by the City as a separate strategy
- Alternative Modes of Transportation (e.g., sidewalk, cycling systems)
- Localized Intersection and Operational Improvements (e.g., traffic signals, turning lanes)
- Widening Portage Parkway from Applewood Crescent to Jane Street (e.g., 2 to 4 lanes)
- Extending Portage Parkway from Jane Street crossing the Black Creek channel to Creditstone Road (e.g., new 4 lane roadway)

You are invited to attend the second and final PIC for this study, which is being held to present the assessment of alternative design concepts for the widening and extension of Portage Parkway and preliminary preferred design.

The PIC will be an opportunity for the public to review project information and ask questions or discuss comments with members of the project team and is being held on:

DATE: Wednesday, March 9, 2016

TIME: 5:00 pm to 8:00 pm (drop-in session)

LOCATION: Homewood Suites by Hilton, 618 Applewood Crescent, Vaughan, Ontario

For information on study progress and updates, please visit:

http://www.vaughan.ca/projects/projects_and_studies/environmental_assessment_studies/Pages/Class-EA-Study-for-Portage-Parkway.aspx

CONTACTS

If you have any questions/comments and cannot attend the PIC, please contact:

Marta Roias, RPP
City of Vaughan Project Manager
2141 Major Mackenzie Drive
Vaughan, ON L6A 1T1
T: 905-832-8585 Ext. 8026
F: 905-832-6145
E: Marta.Roias@vaughan.ca

or

Stephen Keen, P.Eng.
CIMA Canada Inc. Consultant Project Manager
3027 Harvester Road, Suite 400
Burlington, ON L7N 3G7
T: 289-288-0287 Ext. 6834
F: 289-288-0285
E: Stephen.Keen@cima.ca

Information is being collected under the Freedom of Information and Protection of Privacy Act. With the exception of personal information, all comments will become part of the public record.

ANDREW PEARCE, Director, Development Engineering and Infrastructure Planning

This Notice first issued February 23, 2016