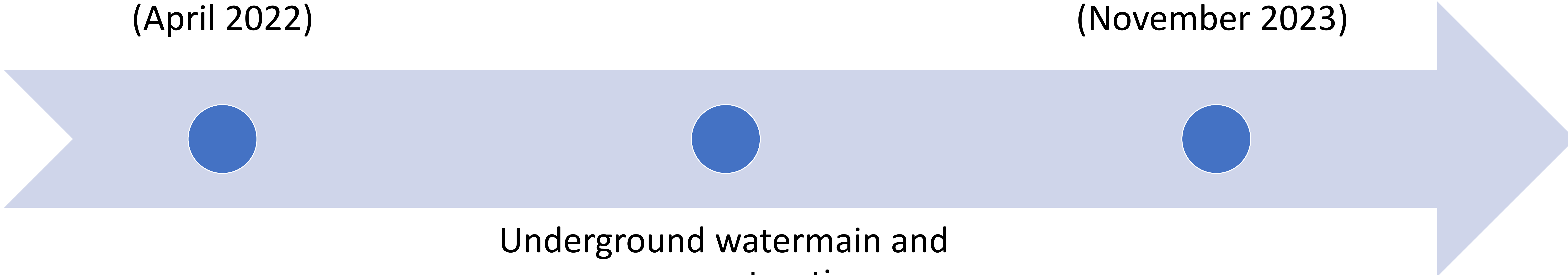


Woodbridge Avenue Improvements Project

Construction Progress

Construction start
(April 2022)

Streetscaping and
above ground works
(November 2023)



Underground watermain and
sewer construction
(Completed)

Woodbridge Avenue Improvements Project

Why is Woodbridge Avenue being improved?

Woodbridge Avenue is a commercial and residential street located in the heart of Woodbridge Village. The Woodbridge Avenue corridor and surrounding area have rapidly changed in the last decade with high-density development, including residential and mixed-use buildings, resulting in a larger urbanized area. The Woodbridge Avenue Streetscape Plan was completed in 2017 to address this growth and ensure the design of Woodbridge Avenue continues to be safe, accessible, inviting and timeless. The objective of the City's Woodbridge Avenue Improvements and Streetscaping Project is to beautify the area, respect its history and complete key infrastructure improvements to serve the corridor for generations to come.

What work is being done?

The Woodbridge Avenue Improvements and Streetscaping Project provides a framework for the layout and detailed design of the public and private streetscape spaces, including pedestrian connections. Under this framework, the design will:

- promote walking and transit use.
- reduce conflicts between pedestrians and vehicles.
- support daily community life and events.
- capture inspirational, educational and heritage elements.
- build on the convenient access to the trail along the Humber River system.



Woodbridge Avenue Improvements Project

How has the community been involved?

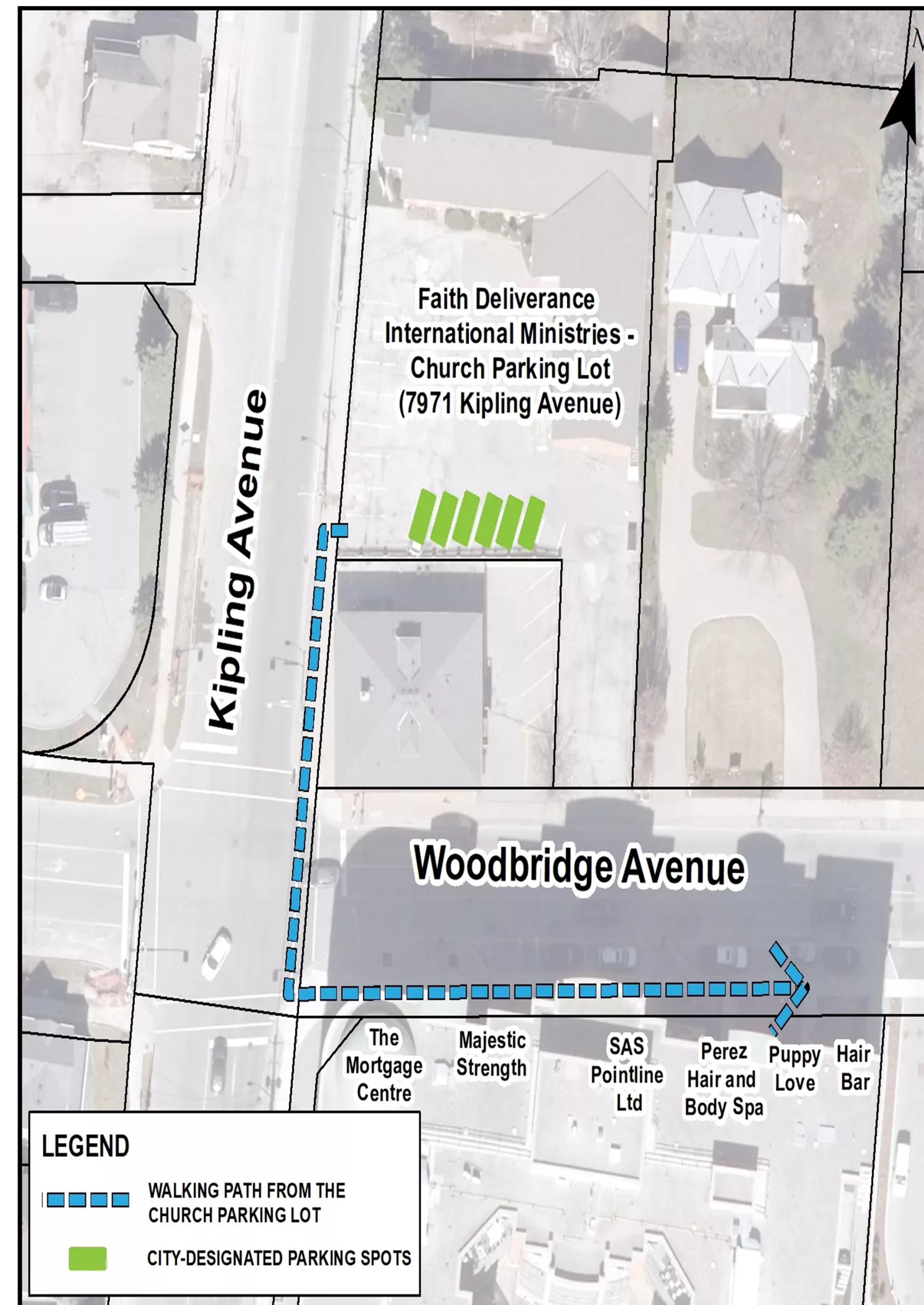
Public input has been a key component of this project. In 2021, residents were invited to attend an Open House to learn more about the project and design concepts, review timelines and ask questions directly to the project team.

In 2022, a drop-in style information session was held to provide residents with a progress update.

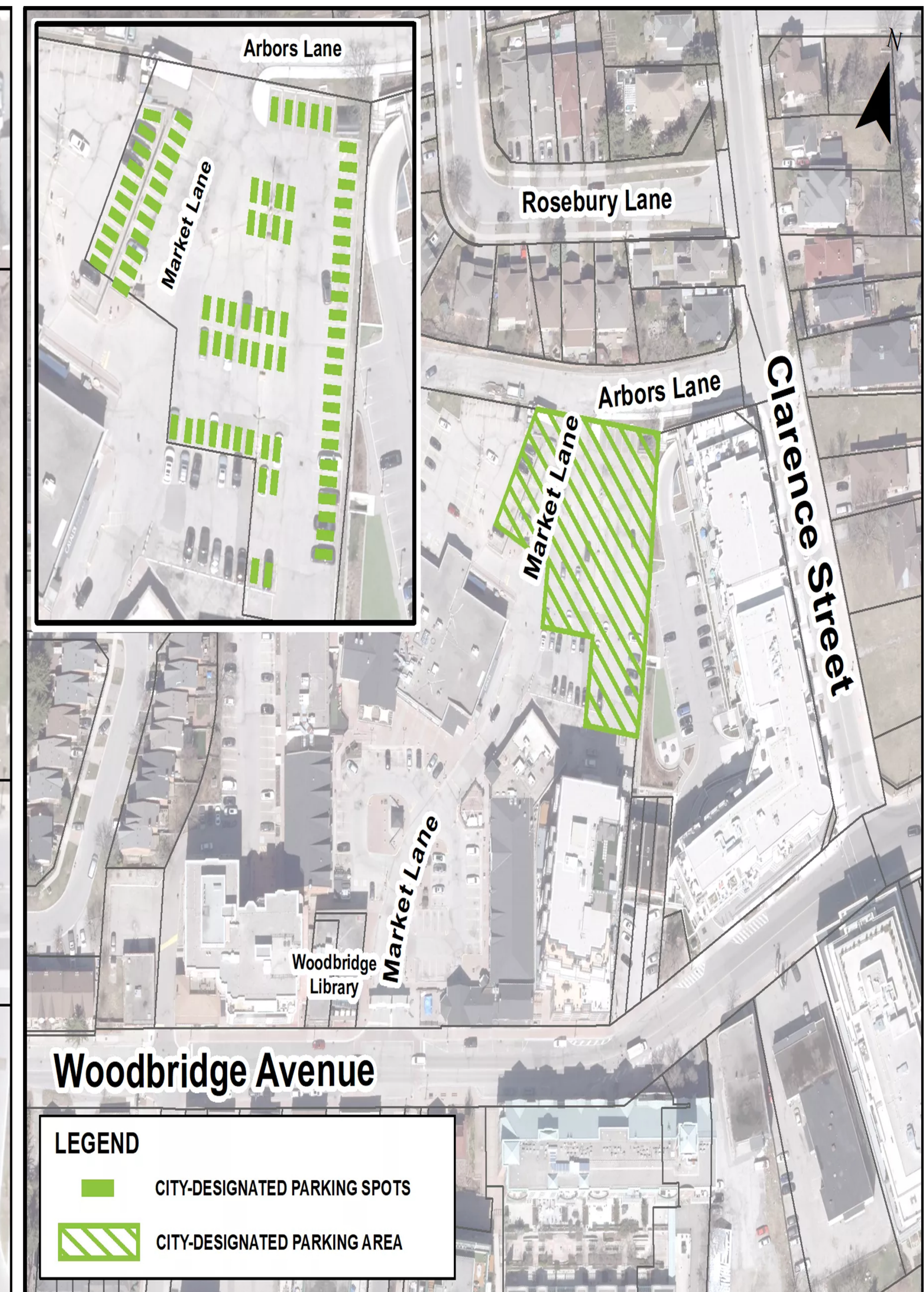
Are businesses still open?

Yes! During construction, **Woodbridge Avenue is still open for business.** Residents are encouraged to continue to support local stores, restaurants and organizations throughout construction. Plenty of parking is available in the area. Designated parking spots at 7971 Kipling Ave. (in the Faith Deliverance International Ministries Church parking lot) and 140 Woodbridge Avenue (Marketlane Shopping Centre) offer easy access to shops and services along Woodbridge Avenue while the street undergoes improvements.

You asked, We Listened!



Additional parking located at 7971 Kipling Ave.

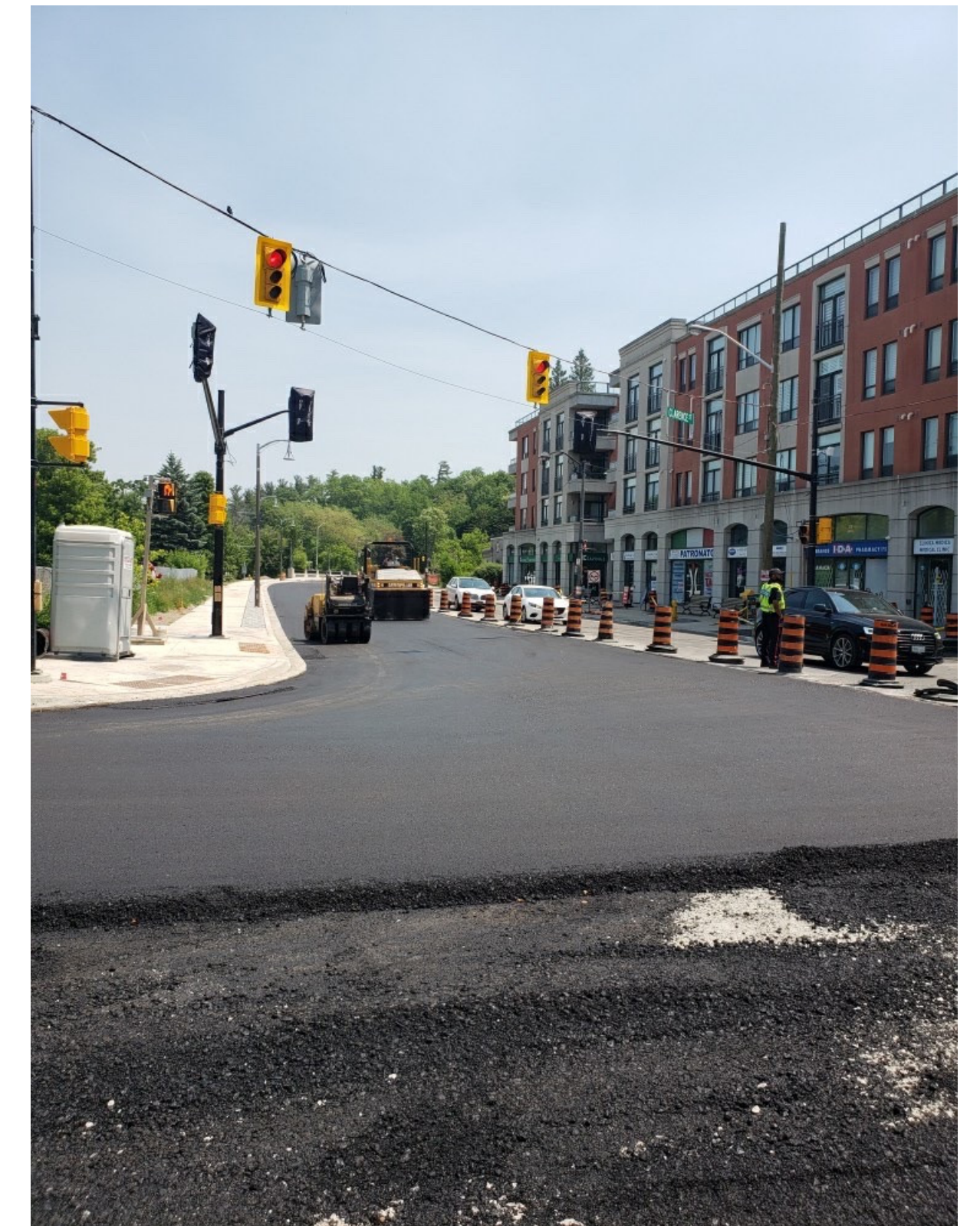
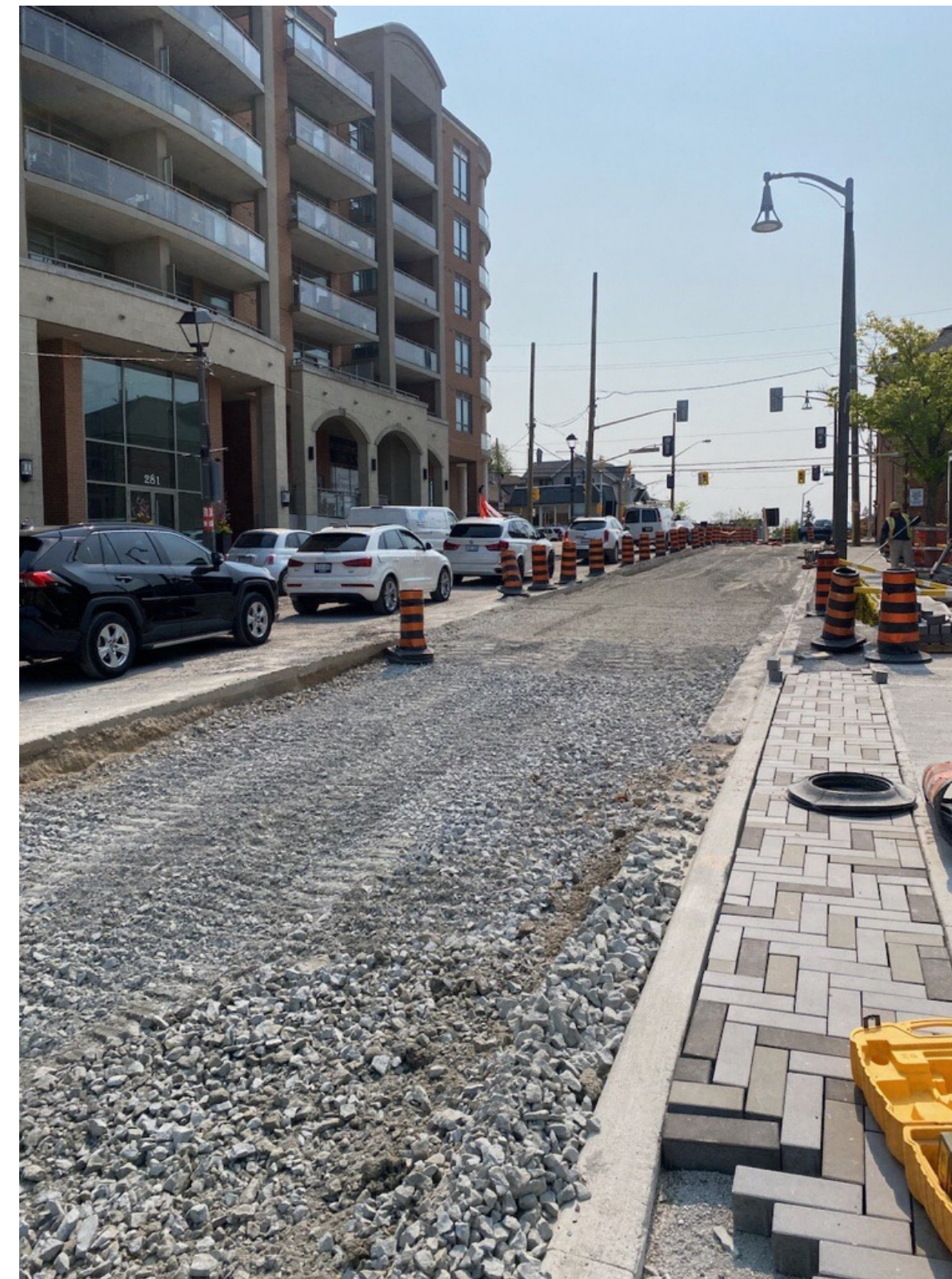


Additional parking located at 140 Woodbridge Ave.

Woodbridge Avenue Improvements Project

Road Reconstruction

- Full road reconstruction
 - Replacement of the granular road base, asphalt pavement, curbs and gutters, and sidewalks
- Streetlight replacement
- Traffic signal upgrades
- Streetscaping and landscaping improvements
- Street tree planting
- Parking lay-bys (designated paved parking areas)



Woodbridge Avenue Improvements Project

Streetscape Features from Concept to Reality

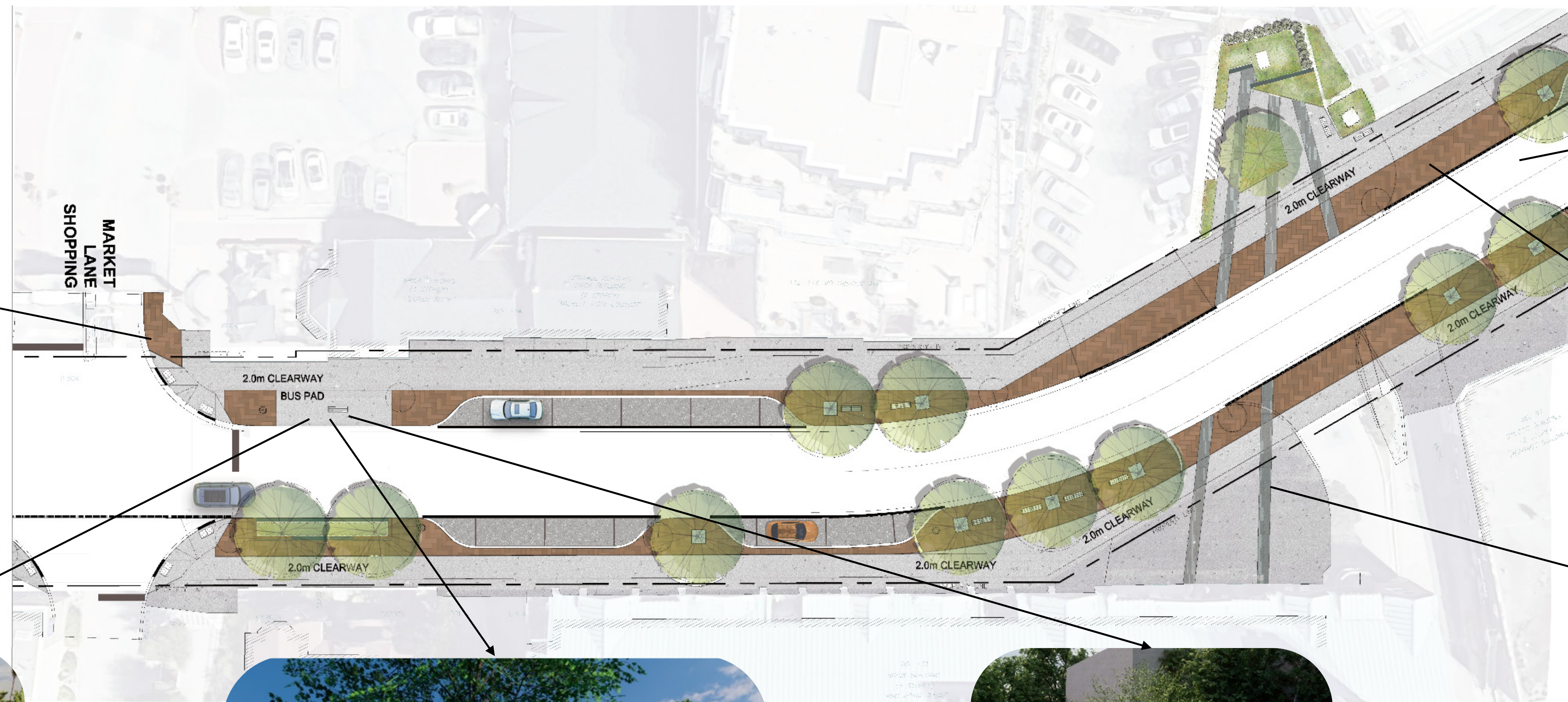


Woodbridge Avenue Improvements Project

Streetscape Concept to Reality

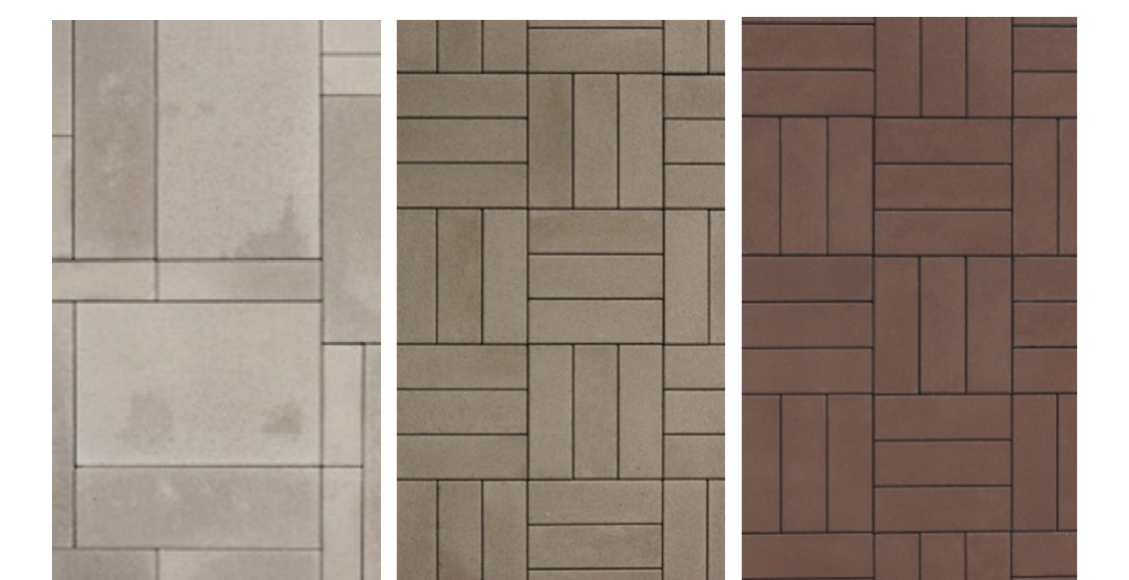
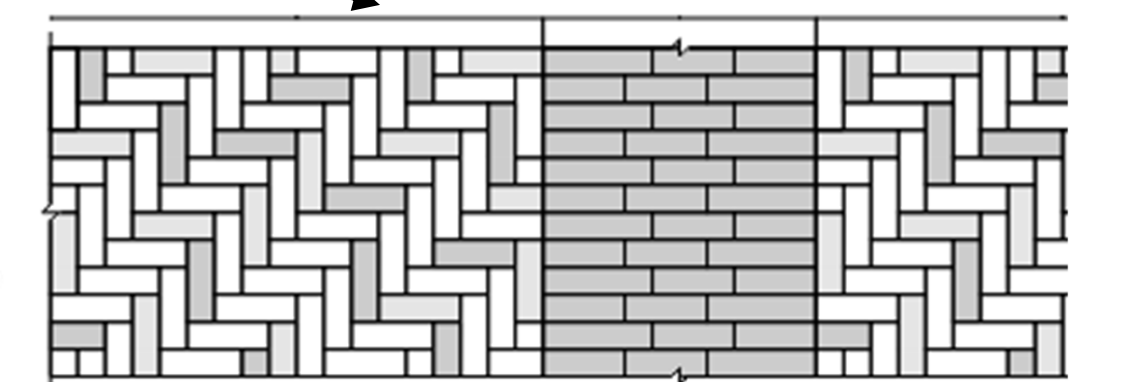


Paver installation (typ.)



Pavers and Roadway (typ.)

Paver type and configuration



Planter Concept



Bench Concept

Woodbridge Avenue Improvements Project

Site Furnishings & Plantings

- Waste receptacles
- Pendant lighting heads
- Impressed coloured crosswalks
- Benches
- Shrubs and Trees



Saphirsprudel



Freeman's Maple



Skycole Honeylocust



Bloodgood London
Plane Tree



Emerald Cedar

Woodbridge Avenue Improvements Project

Streetscape Concept (updated)



Woodbridge Avenue Improvements Project

Streetscape Concept (updated)

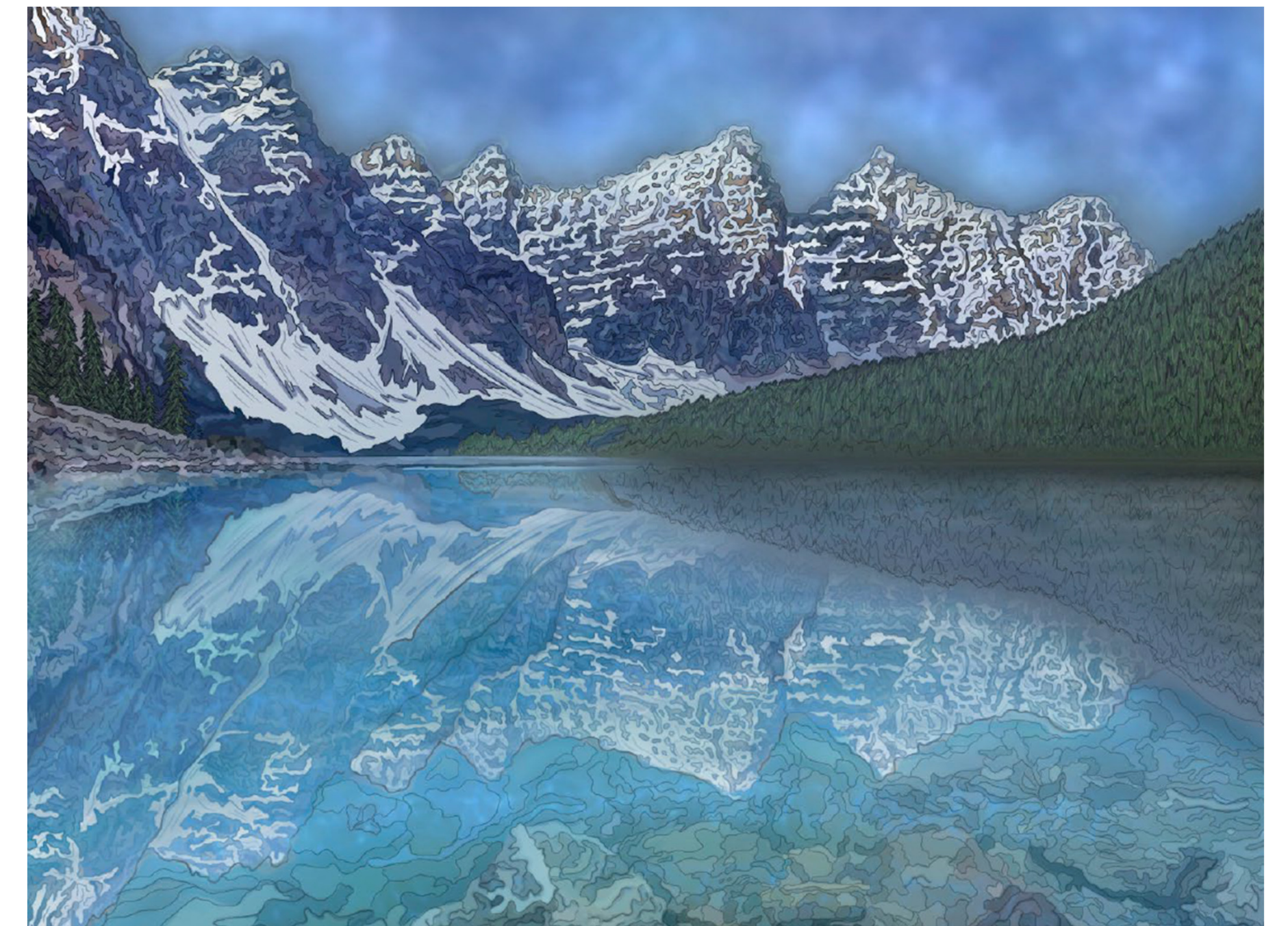
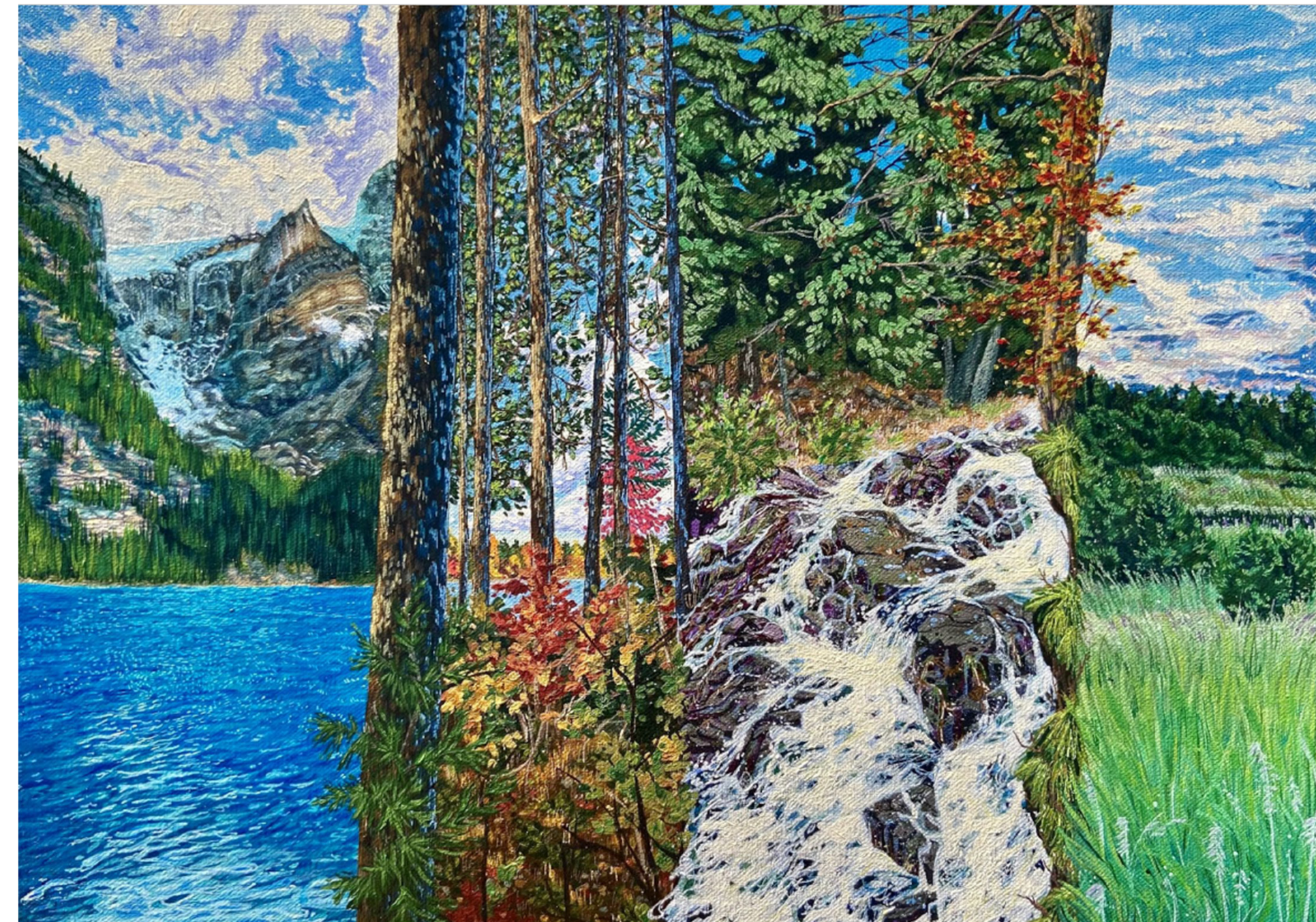


Woodbridge Avenue Improvements Project

ARTonBOXES Program | The Group of Seven REMIXED

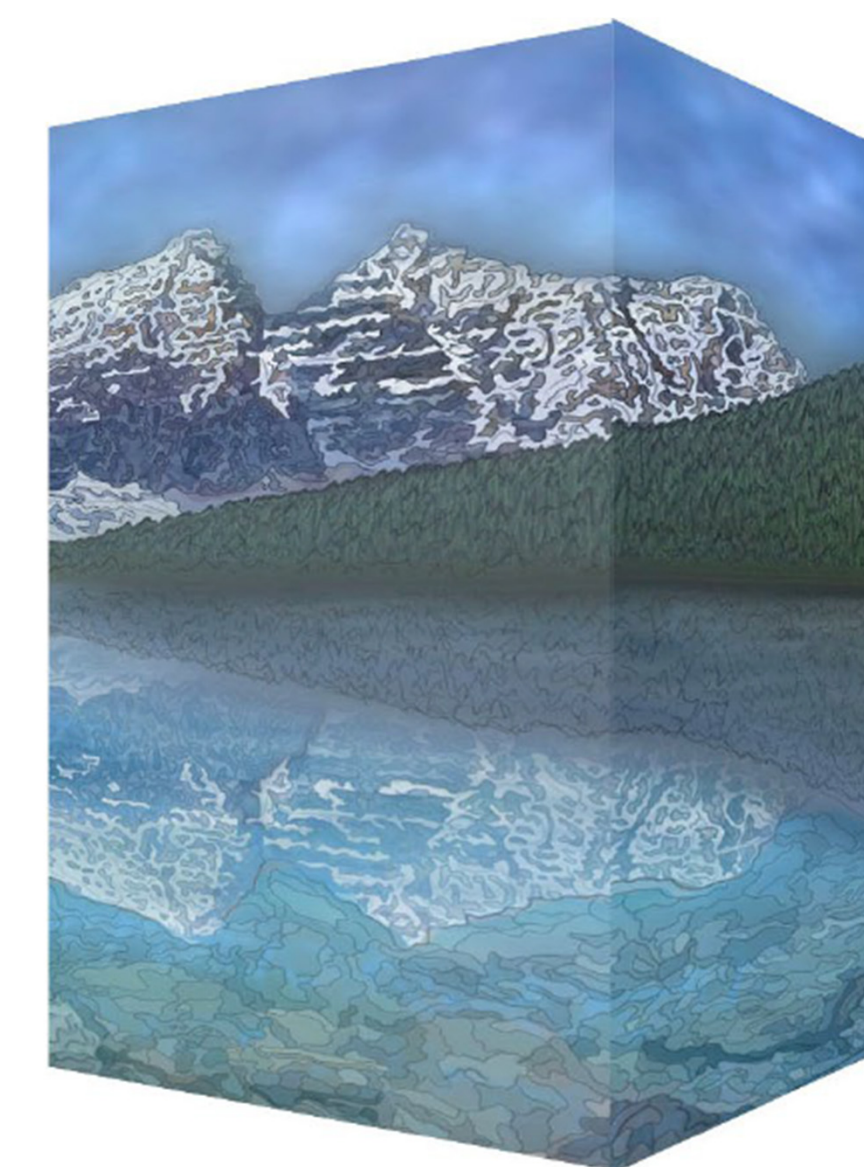
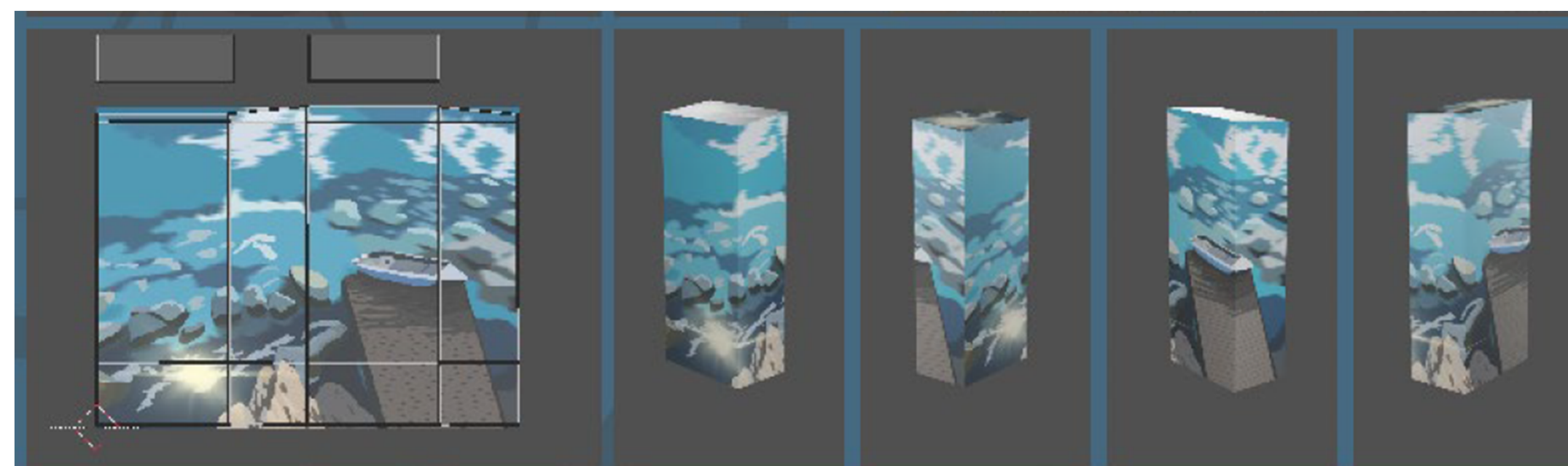
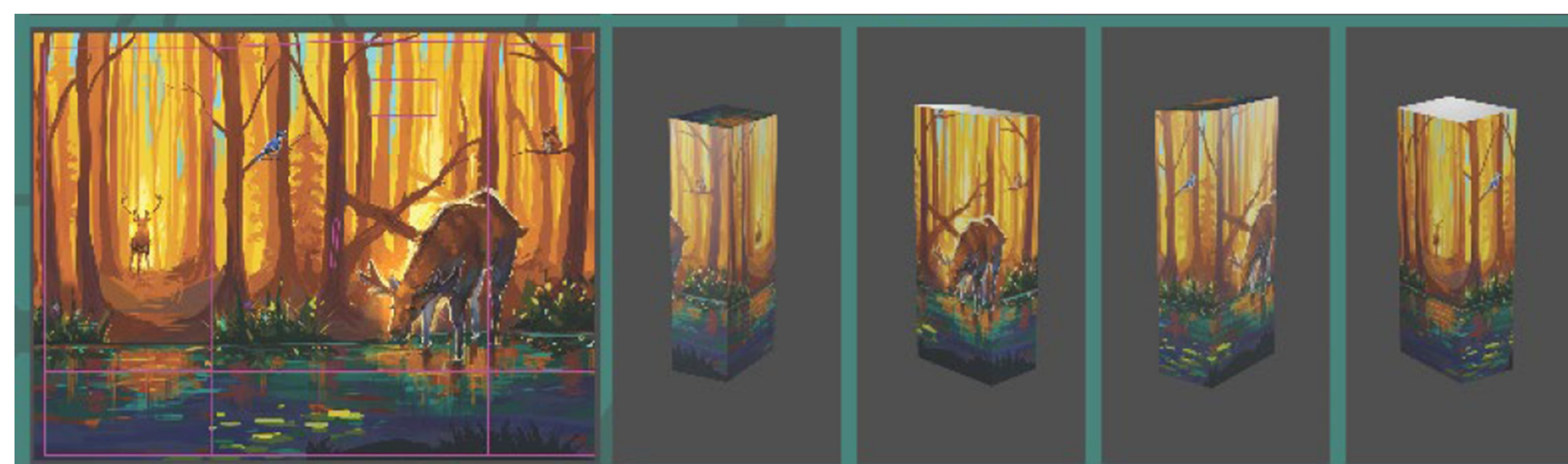


Example Traffic Signal Cabinets



To be installed at:

- Kipling Avenue and Woodbridge Avenue
- Market Lane and Woodbridge Avenue
- Clarence Street and Woodbridge Avenue
- Islington Avenue and Woodbridge Avenue



Note: Specific artwork is subject to change