

Welcome to the

# Bartley Smith Greenway Trail Public Open House!

The Bartley Smith  
Greenway



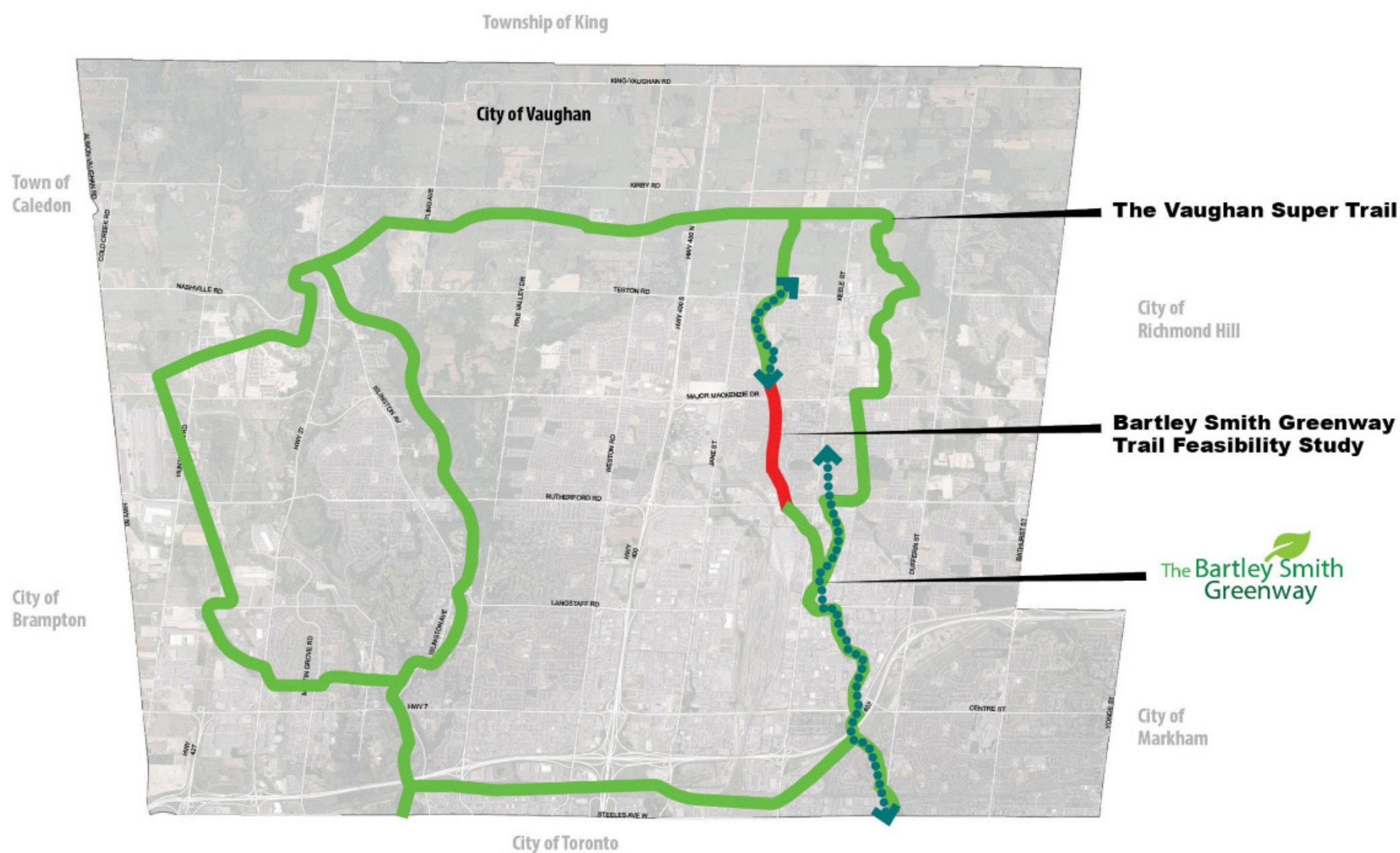
[vaughan.ca/BartleySmithTrail](http://vaughan.ca/BartleySmithTrail)

**Bartley Smith Greenway Trail**  
Closing the Gap



# Schedule and Timeline

## Study Area

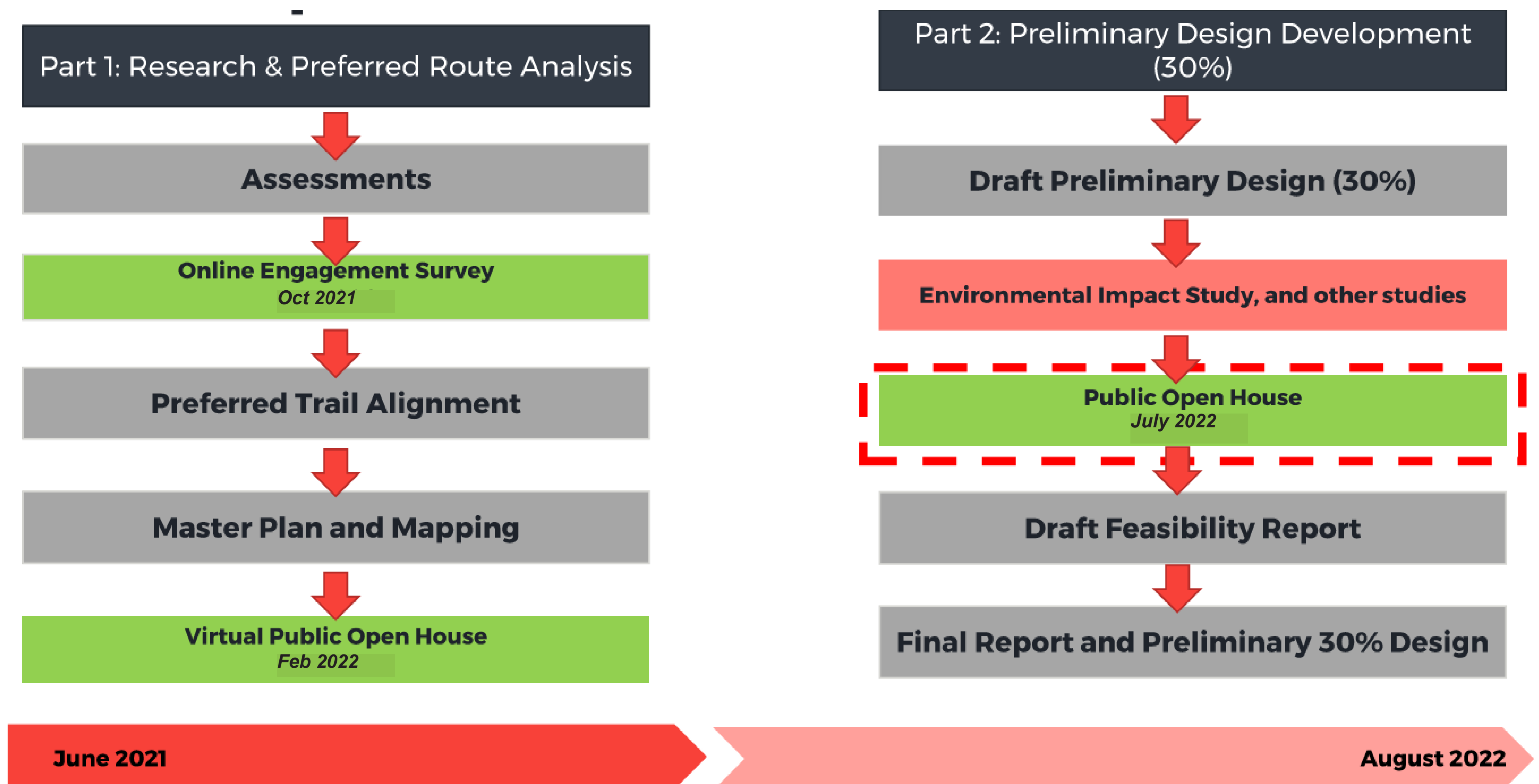


### Study Context

The purpose of this study is to identify a preferred route to close a three-kilometer gap in the trail between McNaughton Road and Rutherford Road. In doing so, the City will be one step closer to creating an interconnected and seamless network of city-wide cycling and walking trails.

The Bartley Smith Greenway is a 15-kilometre recreational, multi-use trail that is a key component of the Vaughan Super Trail, a world-class 100-kilometre-long city-wide trail network that connects users to nature, cultural heritage, communities and special destinations throughout the city of Vaughan.

## Project Timeline & Next Steps





# Public Participation

## How I Can Get Involved

### Share your feedback with us live at the open house!

Public feedback and a series of studies, assessments, mapping and stakeholder consultations have all helped to identify trail route options and road crossings. The current in-person Open House is being held for citizens to once again have a say:

- Review work completed to date
- Learn about the refined trail route, designs and proposed trail treatments
- Hear the proposed phasing for implementation
- Ask questions and provide feedback on the proposed trail alignment

The feedback received during this open house will be included within the final feasibility study document to inform further investigation and more detailed trail design.

### Other Ways to Comment

For people unable to attend, a video presentation and study materials will be posted to the web page. There will be an opportunity to provide feedback and submit comments directly to the team until Thursday, July 21.

Please visit: [vaughan.ca/BartleySmithTrail](https://vaughan.ca/BartleySmithTrail)  
or Scan the QR code!



## What We've Heard to Date

Community Engagement for the Bartley Smith Trail Feasibility Study is a vital component of the success of the study as it moves into the next phases. Based on the strong response rate and the support from both internal and external stakeholders for the types of recommendations that are emerging through the study, it is clear that the community has a strong interest in seeing this study succeed.

Overall, participants of the February 2022 Virtual Public Open House demonstrated clear support for the trail itself as it would increase recreation and healthy, active lifestyles, but they would prefer that the Project Team adjusts the proposed alignment and consider the concerns brought forward.

## Concerns Raised

### Bridge Crossing

Many residents were concerned about the proposed bridge crossing at Mountcharles Crescent. In addition to event participation, members of the street collectively organized and express their concerns. With that said, some residents emphasized their agreement with the proposed location of the bridge crossing at Mount Charles Crescent.

### Security

Several participants noted concerns over security with the addition of the trail near their backyards. Specifically, participants are worried that the trail will lead to increased break-ins, crime, and other activities with additional people traveling through the area. Many participants emphasized a need to plan for these concerns and consider design elements like lighting, cameras, and appropriate buffers between the trail and backyards (i.e, buffers that would provide privacy but still enhance safety by maintaining a line of sight to the trail). Considerations should be made for patrolling the trail and general response to concerns over crime.

### Privacy

A number of participants highlighted that the trail is very close to their backyards along the east side of the creek. Participants asked the Project Team to consider moving the trail closer to the creek or proposing a new trail alignment along the west side of the creek to provide more room between the trail and resident's properties. Moving the trail further away from backyards would help residents maintain privacy and allow them to continue enjoying their backyards, reduce unnecessary shade over their backyards, and reduce other security/safety concerns.

### Protect Nature

Participants are concerned that the trail will negatively impact the natural heritage and wildlife in the area. Residents noted that the implementation and construction of the trail will disturb existing plants and animals and undo the progress that has led to what the ravine looks like today. Many of the residents who value the natural area still voiced that there is a strong preference to place the trail further within the natural area to provide a better buffer to houses and most felt the potential negative impacts were not of concern. Desire for new plantings along rear residential lots greatly differed. While some preferred a thick wooded buffer, others requested open views with minimal planting and even requested a desire for manicured turf.

### Litter

Several participants emphasized that the City and TRCA will need to implement a plan for maintaining the trail in terms of picking up litter and other problems that may arise with increased users.

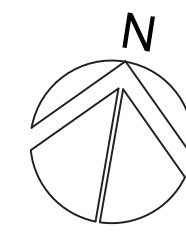
## Actions Taken

In response to comments received at the February 2022 Virtual Public Open House the City and WSP revisited and actioned the following items:

- Increase to the distance between the trail and residential properties by up to 20m, moving the trail closer to the creek where possible.
- Added a boardwalk trail in one section to address concerns over flooding and erosion, while maximizing the buffer in a constrained space.
- Removed the bridge crossing at Mountcharles Cres., and indicated that it could be revisited for future re-evaluation if the need/desire is expressed by trail users in future.
- Removed the bride crossing over the pond (north of Major MacKenzie Drive) due to flood impact and pond maintenance concerns.

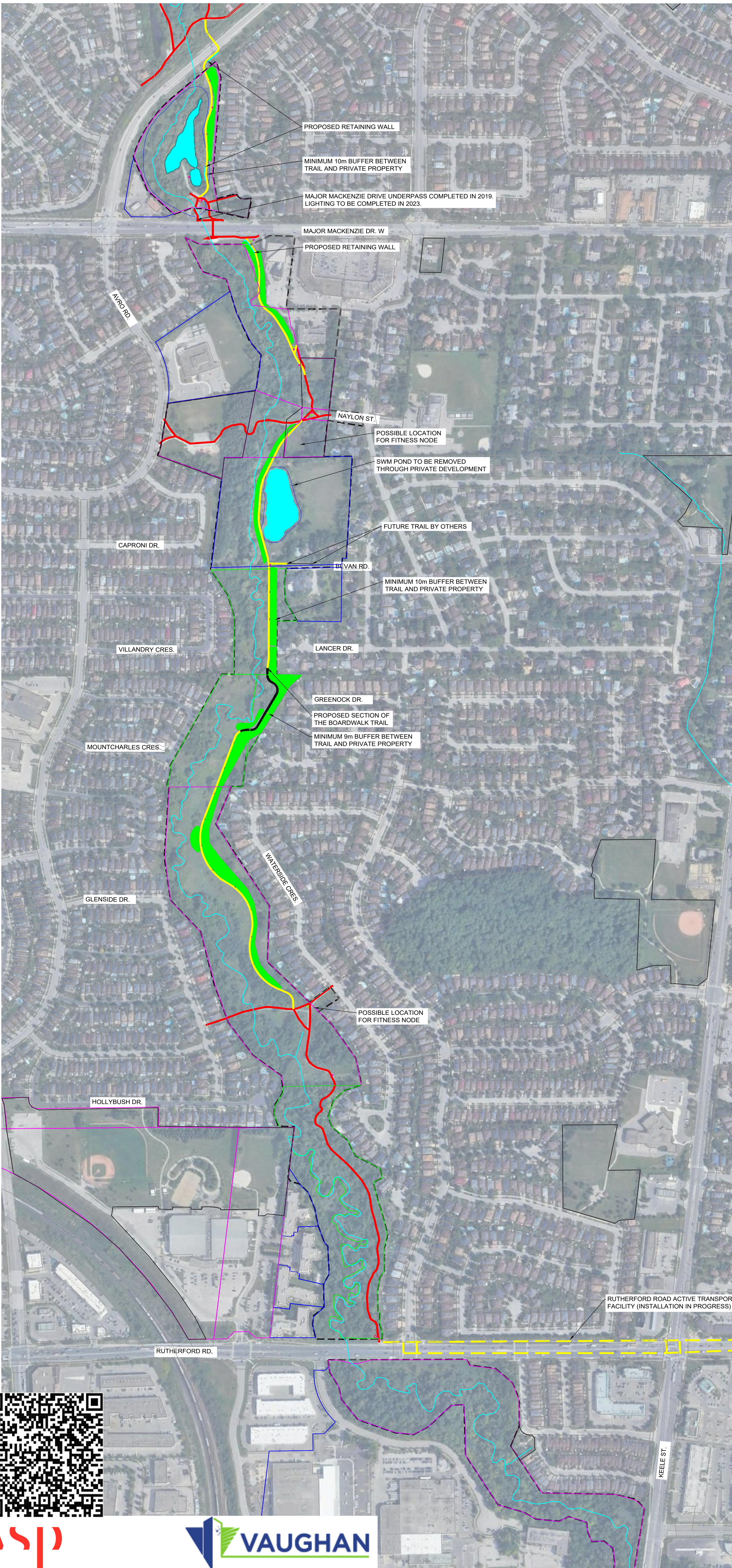


# Proposed Trail Route



## LEGEND KEY

- SITE BOUNDARY
- EXISTING TRAIL - FACILITY (TO REMAIN)
- EXISTING TRAIL - (UPGRADE TO 3m ASPHALT)
- PROPOSED NEW TRAIL - (3m WIDE ASPHALT)
- RUTHERFORD ROAD ACTIVE TRANSPORTATION FACILITY (INSTALLATION IN PROGRESS)
- TRCA PROPERTY
- CITY OF VAUGHAN PROPERTY
- PRIVATE PROPERTY
- PROPOSED SEATING NODE
- PROPOSED TRAIL HEAD MAP
- PROPOSED MINOR WAYFINDING SIGNAGE
- DON RIVER WEST BRANCH
- TRCA 100 YEAR FLOODLINE
- PROPOSED PLANTING
- WATER BODY
- STORMWATER MANAGEMENT POND
- PARKS

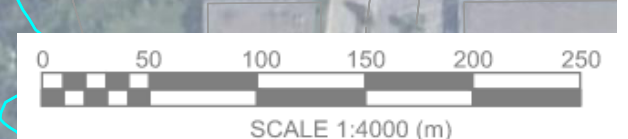


## Tell Us Where you Live!

**Please Place a sticker on where you live on the map!**

This helps us get a better idea of who is giving input to the project.

[stickers]

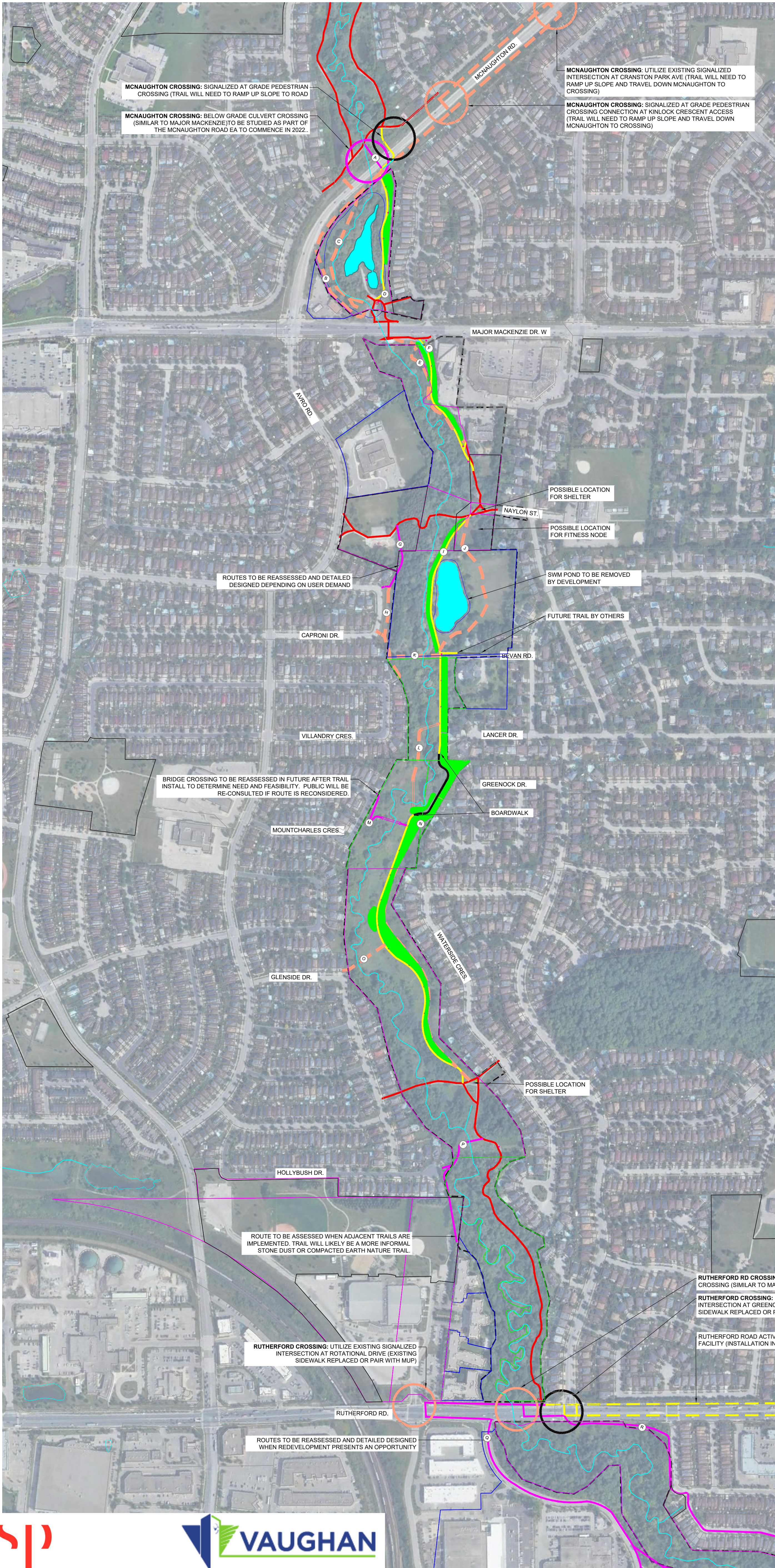
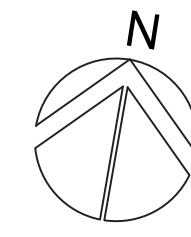


# Bartley Smith Greenway Trail

## Closing the Gap



# Alternative Assessment & Future Options



## LEGEND KEY

- SITE BOUNDARY
- EXISTING TRAIL - FACILITY (TO REMAIN)
- EXISTING TRAIL - (UPGRADE TO 3m ASPHALT)
- PROPOSED NEW TRAIL - (3m WIDE ASPHALT)
- RUTHERFORD ROAD ACTIVE TRANSPORTATION FACILITY (INSTALLATION IN PROGRESS)
- ④ TRAIL ALIGNMENT LABELS
- PROPOSED CROSSING
- PROPOSED CROSSING - EXPLORED AND NOT RECOMMENDED
- PROPOSED CROSSING - POTENTIAL FUTURE OPTION (REQUIRES FUTURE STUDY)
- TRAIL ALIGNMENT - EXPLORED AND NOT RECOMMENDED
- TRAIL ALIGNMENT - POTENTIAL FUTURE OPTION (REQUIRES FUTURE STUDY)
- TRCA PROPERTY
- CITY OF VAUGHAN PROPERTY
- PRIVATE PROPERTY
- PROPOSED SEATING NODE
- PROPOSED TRAIL HEAD MAP
- PROPOSED MINOR WAYFINDING SIGNAGE
- DON RIVER WEST BRANCH
- TRCA 100 YEAR FLOODLINE
- PROPOSED PLANTING
- WATER BODY
- TRAIL ALIGNMENTS - REFER TO FEASIBILITY STUDY
- STORMWATER MANAGEMENT POND
- PARKS

Throughout the Study process, multiple routes and crossings were evaluated and discussed with staff, agencies and the public.

This map provides a record of routes considered and eliminated, and those identified for future consideration.



# Bartley Smith Greenway Trail

## Closing the Gap

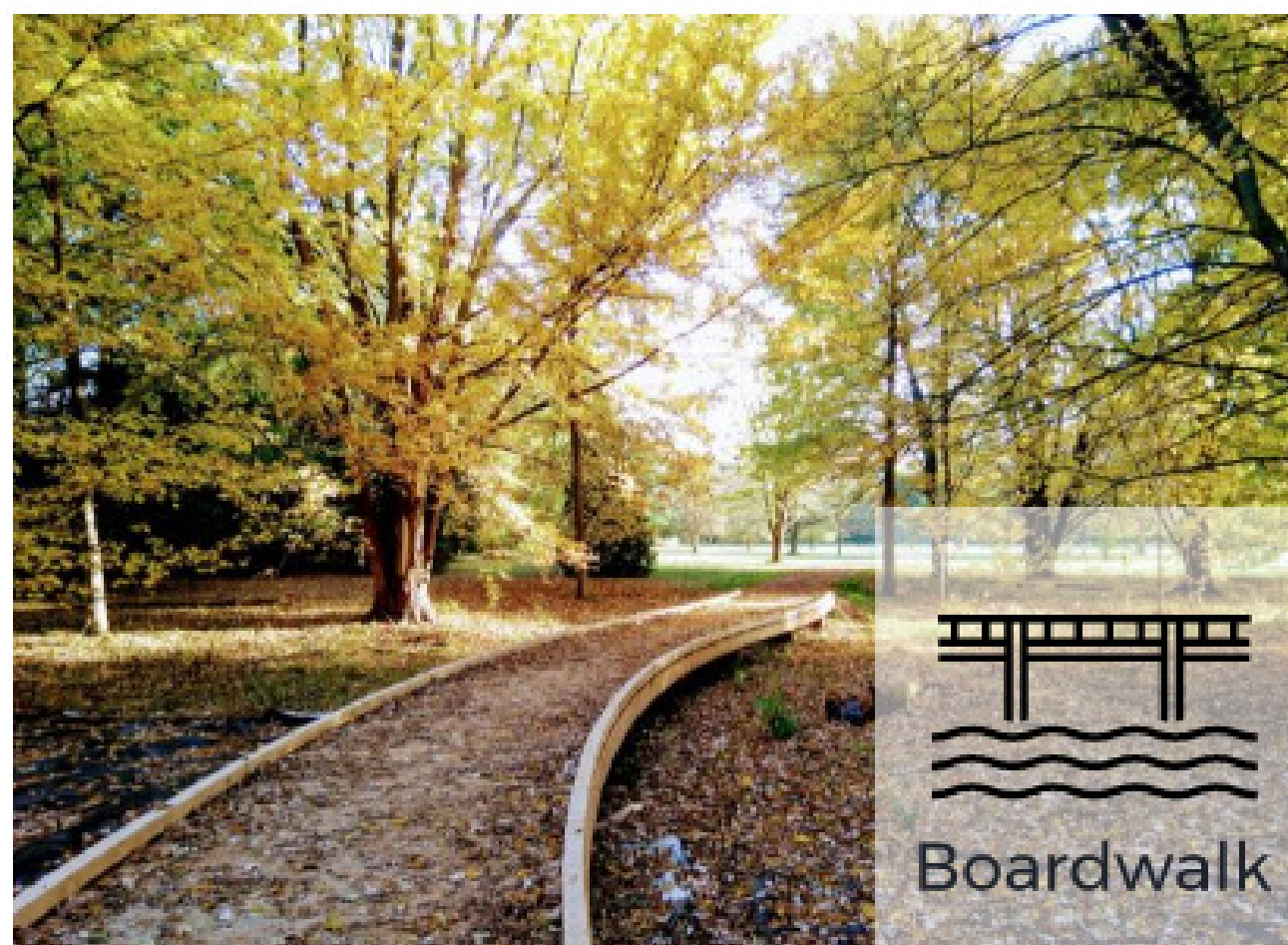


# Features & Amenities

Proposed armour stone retaining wall to mitigate steep slopes along the trail and act as informal seating



Proposed buffer enhancement planting to replace removed vegetation, and provide privacy to adjacent homes and residents



Proposed barrier railings to provide in areas of trail with a larger than 60cm drop in elevation

Proposed boardwalk feature to prevent low areas of trail from flooding and protect from erosion

Proposed shade shelter to provide users with an area of refuge and seating along the trail

Where feasible asphalt surfacing and a three-metre trail width is proposed to provide an accessible experience to trail users of all levels and abilities

Proposed P-gates are to prevent vehicles from driving onto the trail at points of entry



Proposed bench/ or informal seat stones approximately every 50 metres to provide ample resting spots for those traveling along the trail

Proposed major and minor way finding signage used to guide users along the Bartley Smith Greenway trail

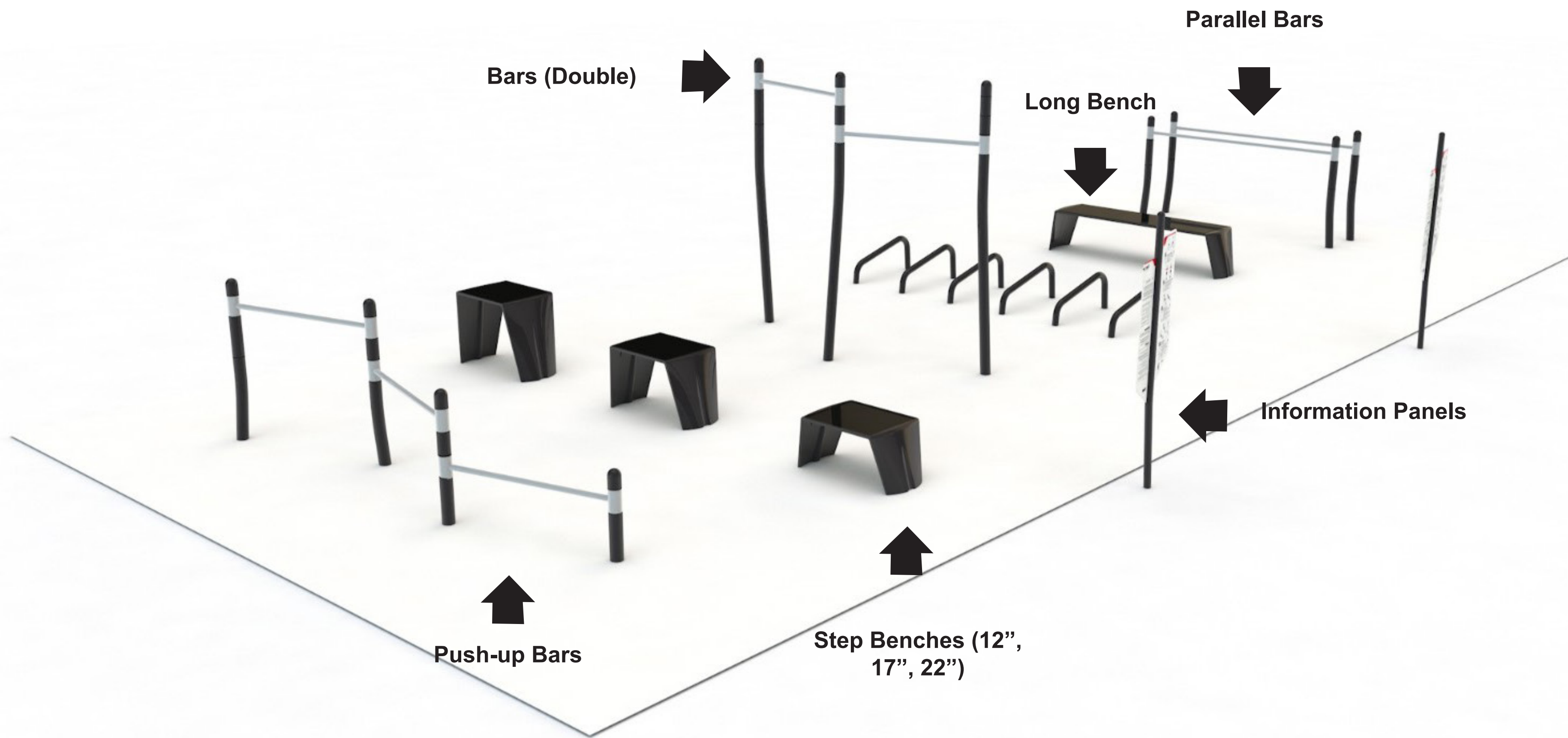


[vaughan.ca/BartleySmithTrail](http://vaughan.ca/BartleySmithTrail)

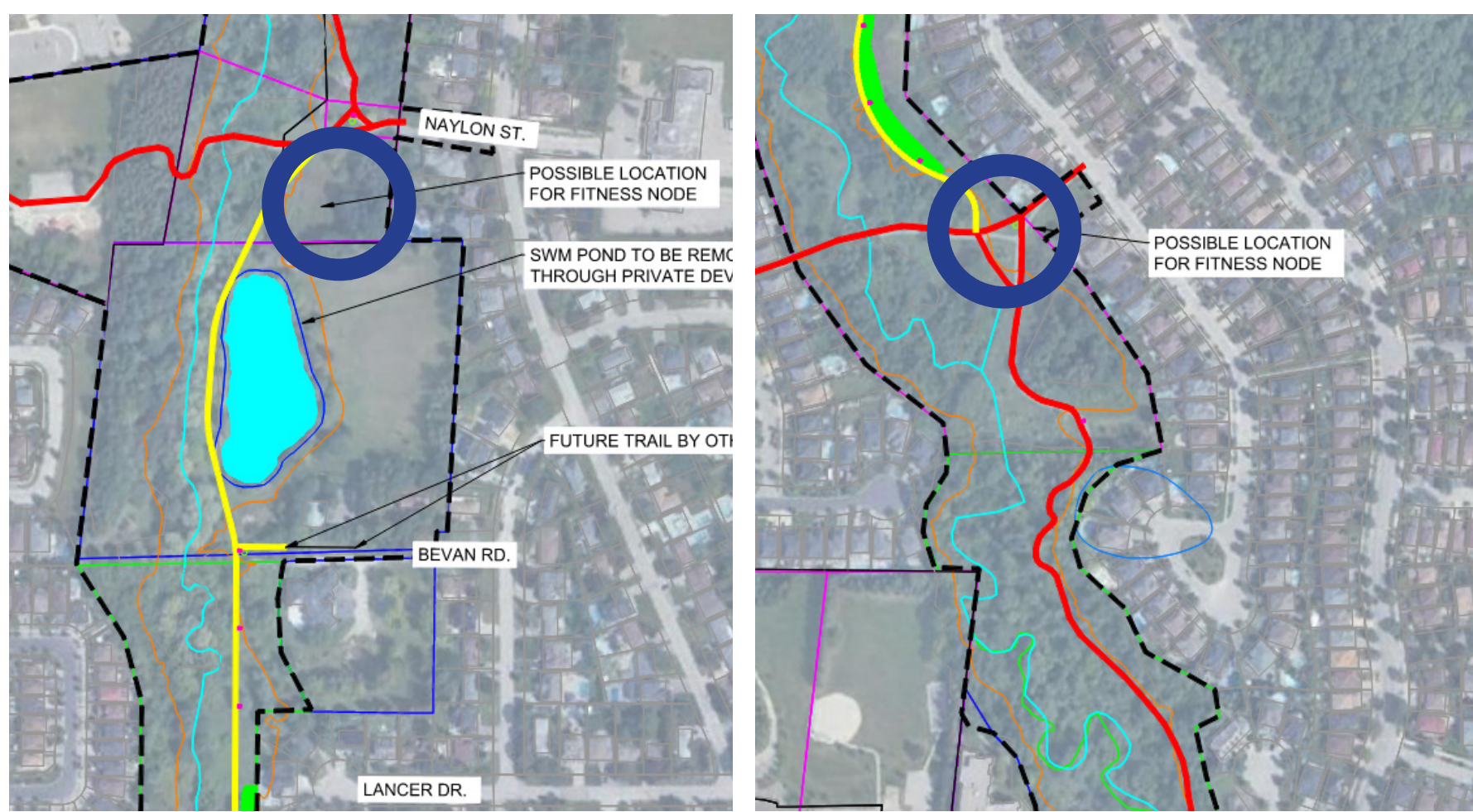
## Bartley Smith Greenway Trail Closing the Gap



# Fitness Node



## Proposed Location Options



Possible locations for a Fitness Node.

## Trekfit Mobile Application

Site signage will direct users to demonstration videos that provide examples of ways users of different skills and interests can participate.

Below are some examples from the Trekfit mobile app. The application provides various functions including:

1. Locating nearest Trekfit Park
2. Identifying list of equipments available in Trekfit Parks
3. Offers training videos based on your goals and fitness level

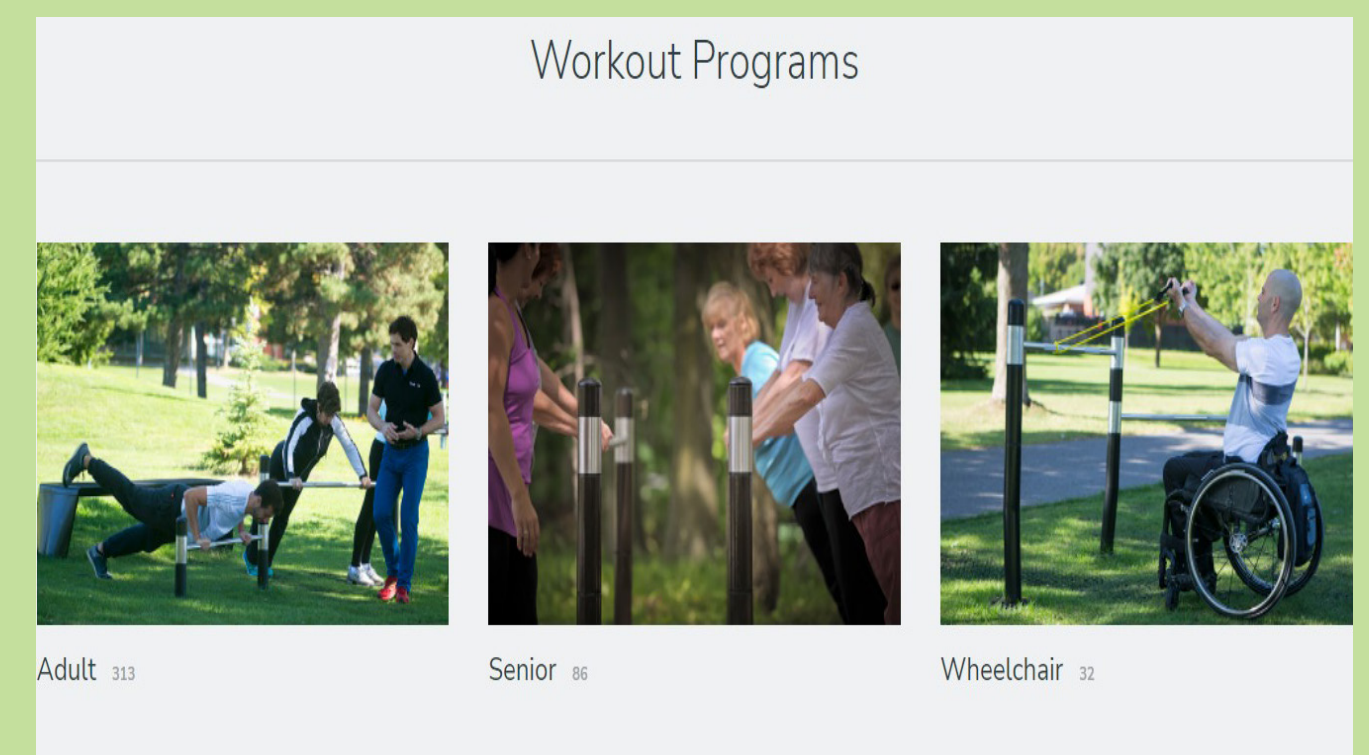


Photo example of workout programs

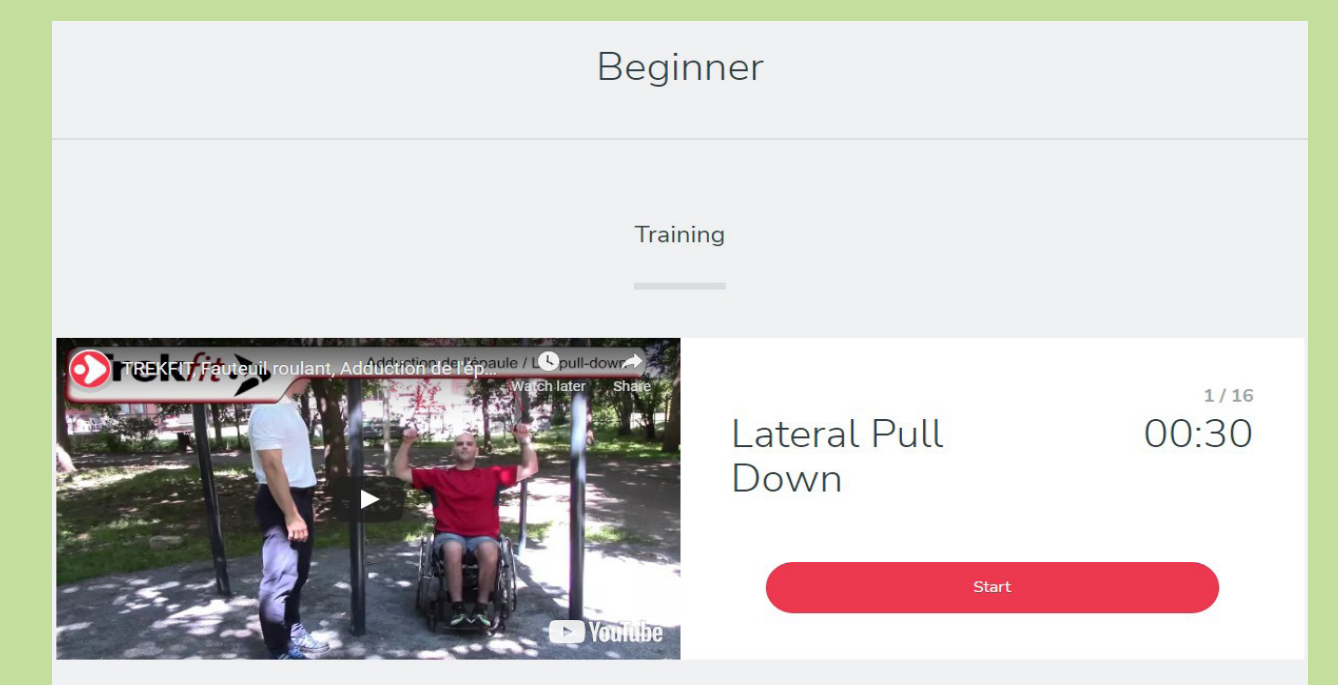
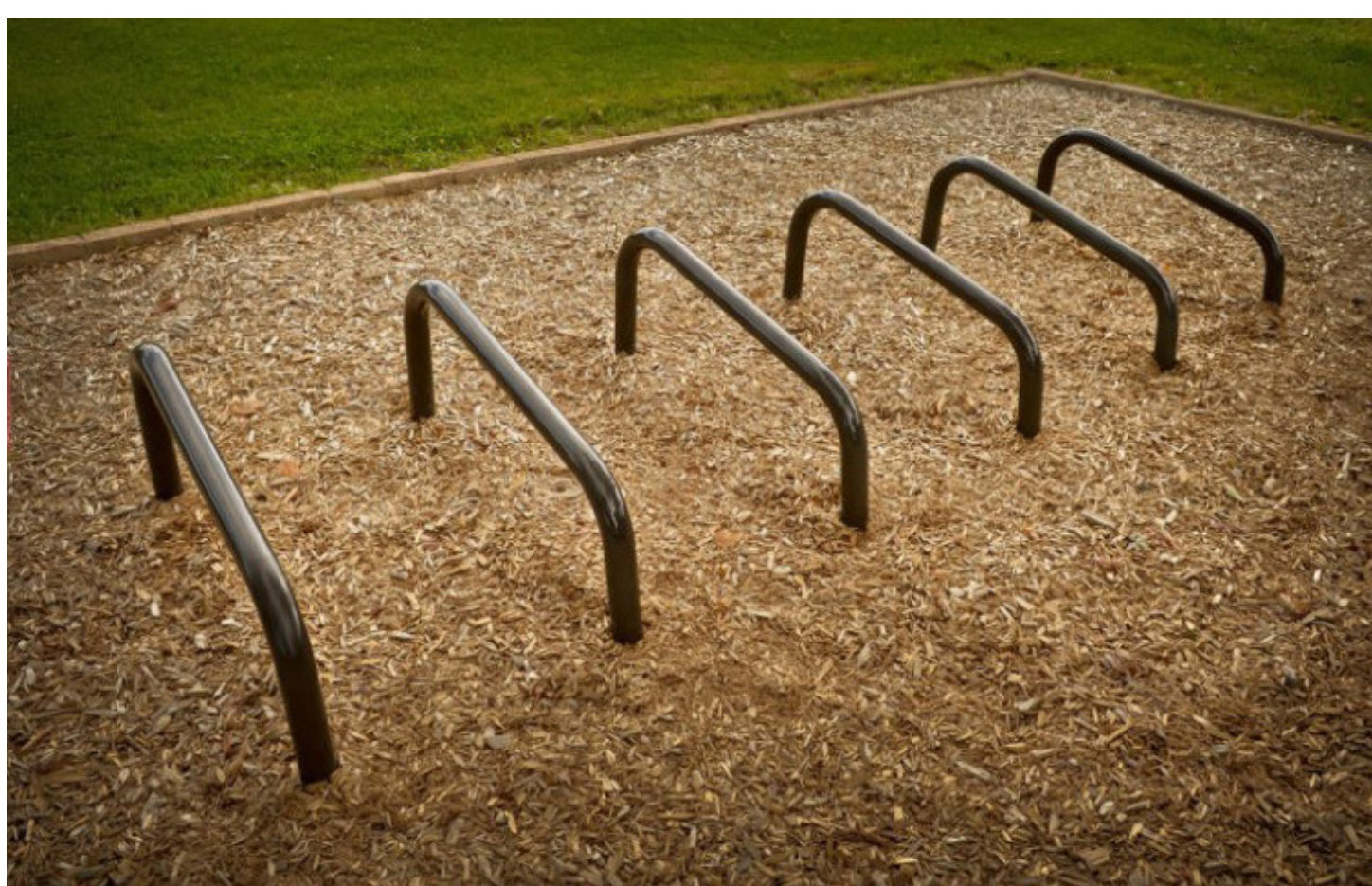


Photo example of exercise video demonstrations



Photos of Trekfit Circuit #4 (Source overall : Trekfit.ca)

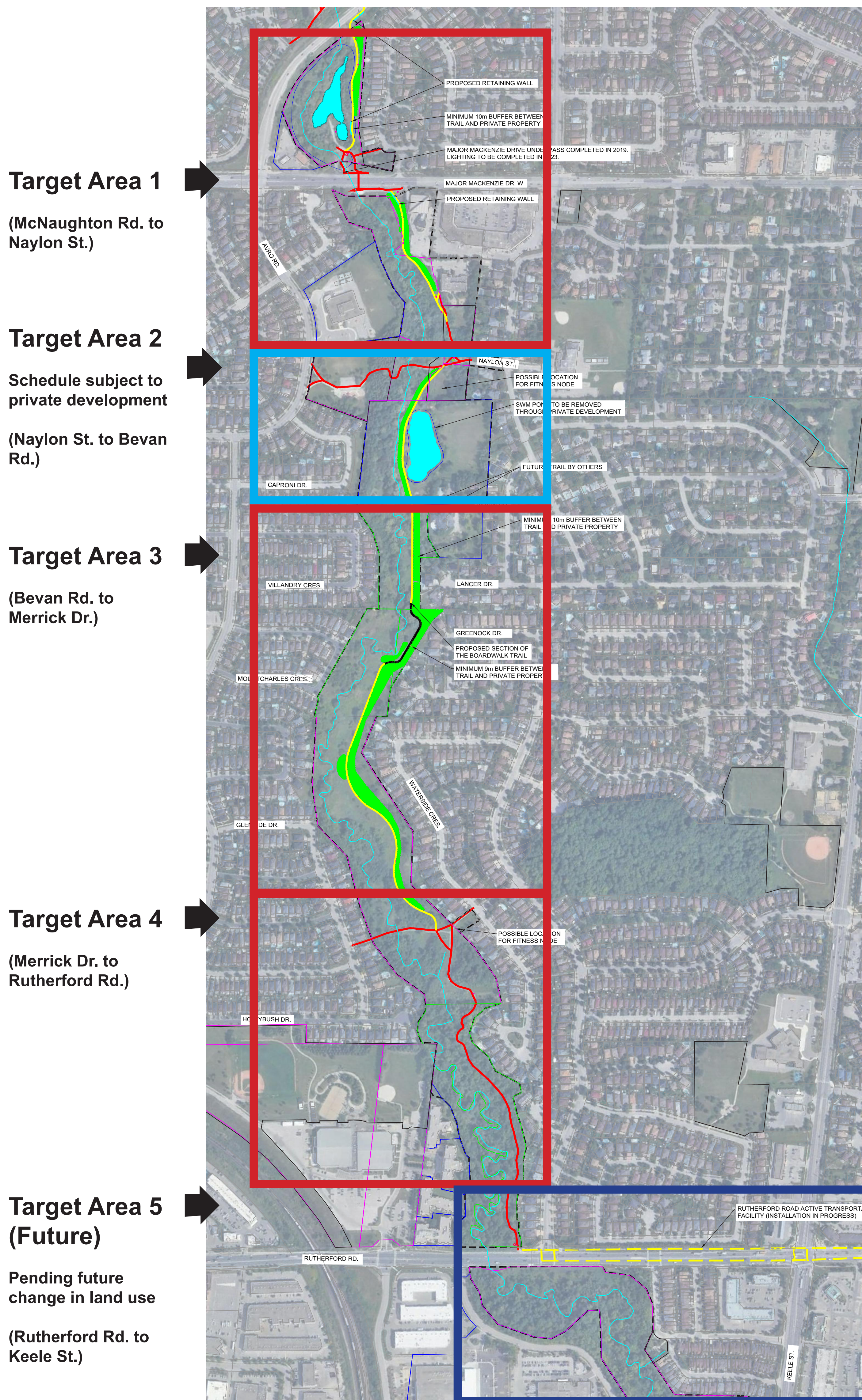




# Construction & Phasing

The trail will be constructed in phases. The trail has been divided into five targeted areas, each corresponding to a different phase of construction.

While the timing is subject to change, construction may start on Target Area 1 as early as 2023



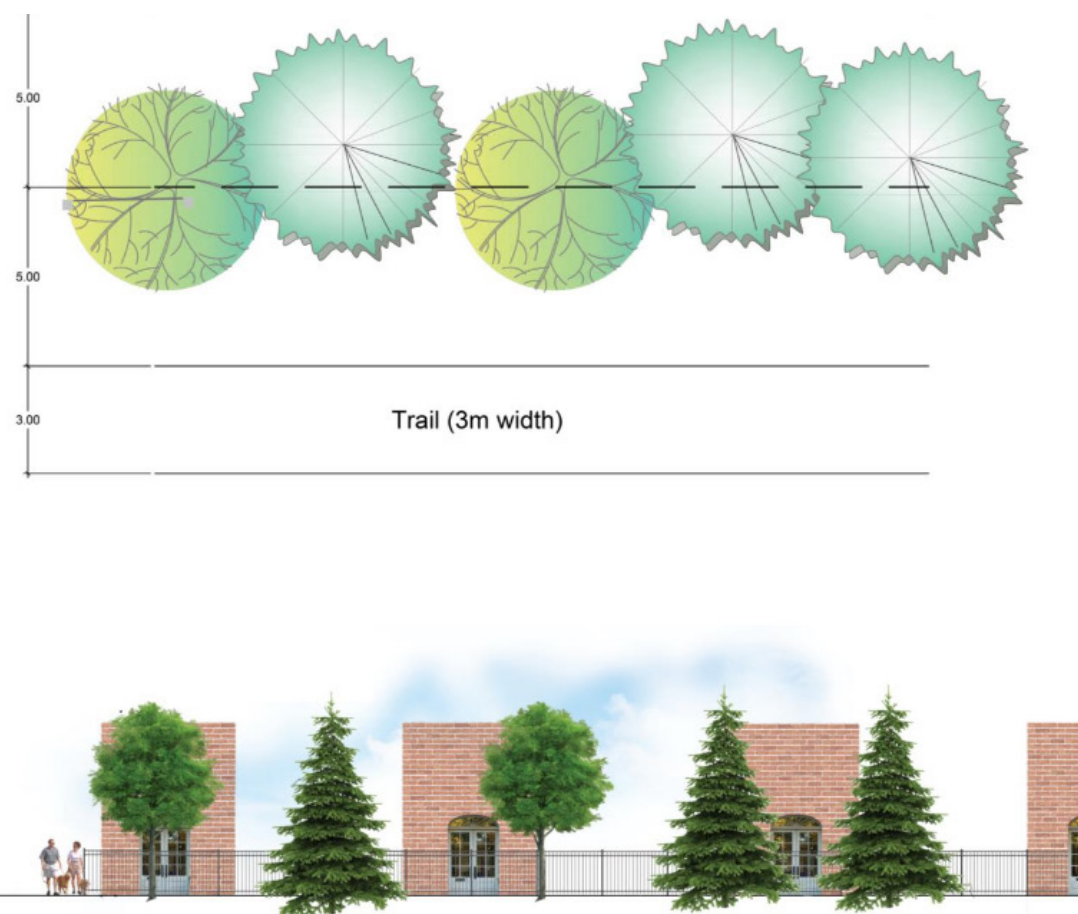
## Target Areas

- Target Area 1: identified as a potential Phase 1 for implementation in 2023/24 and subject to securing necessary easements. The grade separate connection across McNaughton Road EA. This Target Area will complete connections to the Major Mackenzie Drive underpass completed in 2019.
- Target Area 2: Timing dependent and subject to progress of the private development properties.
- Target Area 3: Prior to starting this phase of the trail, the City should establish a connection to Bevan Road in Target Area 2 as part of private development properties.
- Target Area 4: The conversion and widening of the trail from stone dust to asphalt is a lower priority and will be considered after Target Areas 1-3 or as part of Target Area 3 construction.
- Target Area 5: Long term future planning will look for opportunities to develop an off-road trail connection as part of future redevelopment.



# Landscape Buffers & Rehabilitation

## Type 1 - Light Buffer Enhancement Planting



### Characteristics:

- Tall buffer (2 stories+)
- Mix of deciduous & evergreen trees
- Filtered view of the trail and valley

### Application:

- Where space is limited or where a light buffer is desired.
- Desire to maintain the viewshed of the valley
- Desire to maintain stronger sightlines (support Crime Prevention through Environmental Design - CPTED)
- Locations where shade and leaf litter will be tolerated.

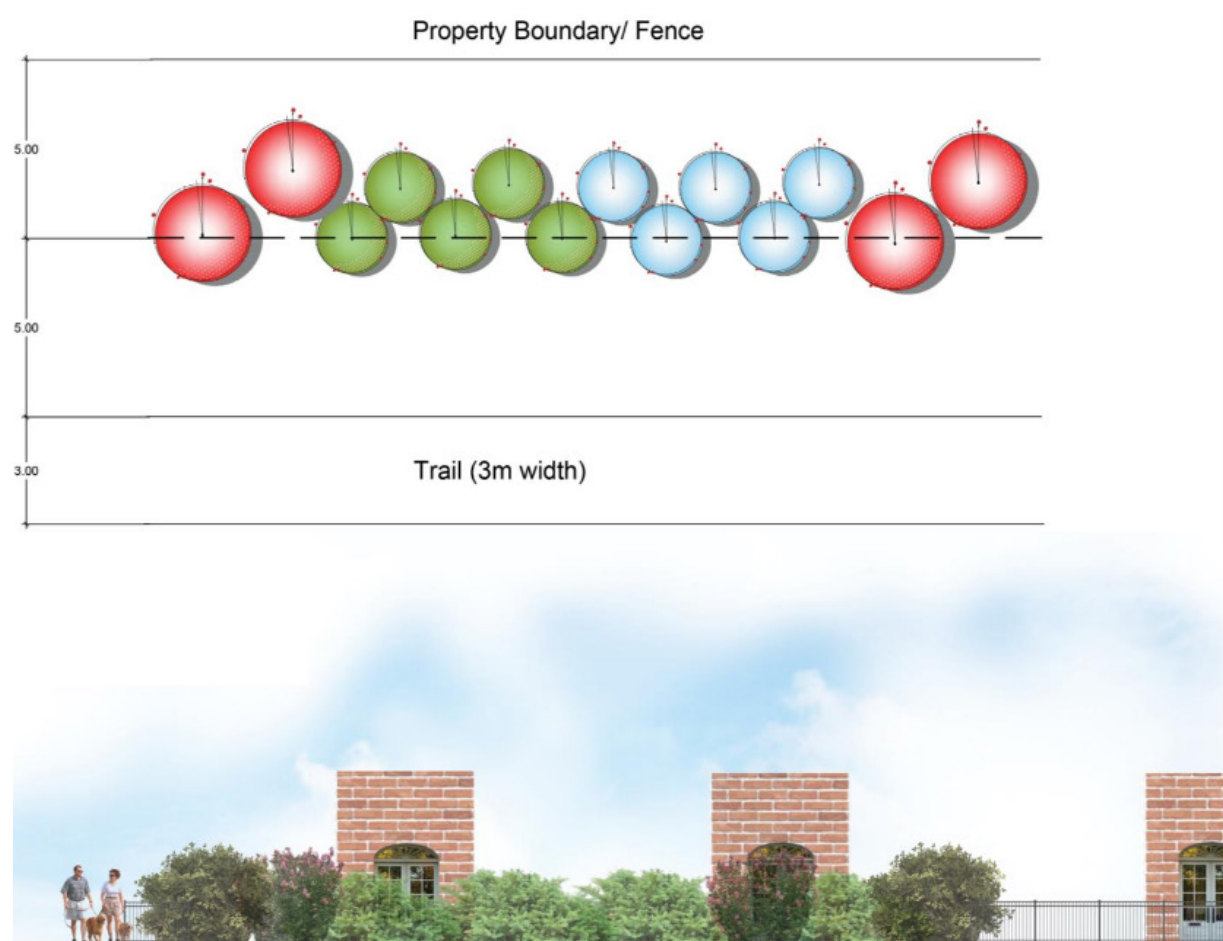
### Deciduous Trees



### Coniferous Trees



## Type 2 - Medium Buffer Enhancement Planting



### Characteristics:

- Short buffer (1.5 – 3 metres tall)
- Mix of deciduous & evergreen trees
- Blocks view of trail users from yards
- Permits views into valley
- Barrier to people wandering off the trail (thorns!)

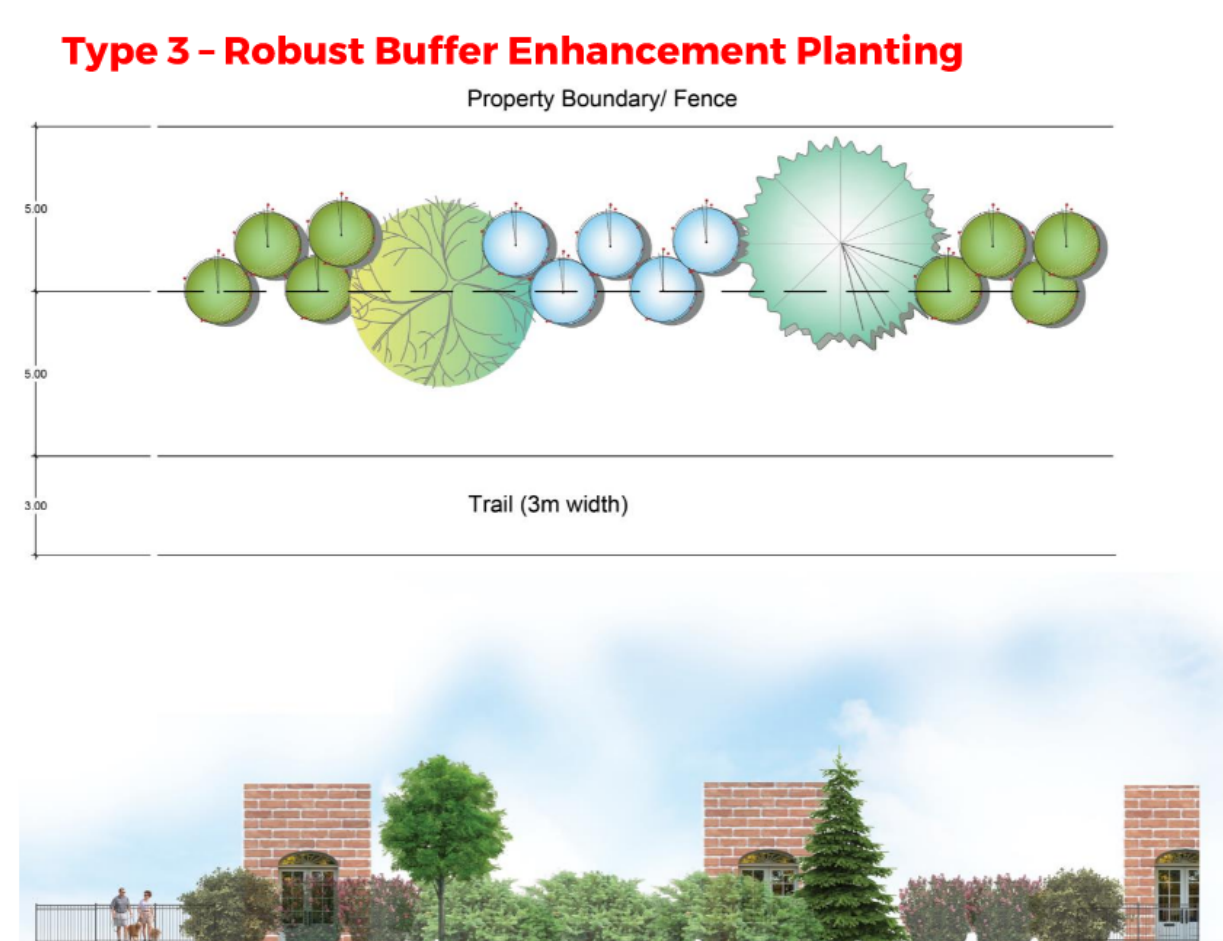
### Application:

- Adjacent to yards with pools/gardens where shade and leaf litter are not desired.
- Desire to maintain the viewshed of the valley.
- Match existing conditions while providing a buffer.

### Shrubs



## Type 3 - Robust Buffer Enhancement Planting



### Characteristics:

- Mix of deciduous & evergreen trees
- Dense naturalized 'forest like' settings that exist or are welcomed.

### Application:

- Desire for maximum privacy
- Where sightlines are not a priority (minimal Crime Prevention through Environmental Design needs)
- Locations where shade and leaf litter will be tolerated.



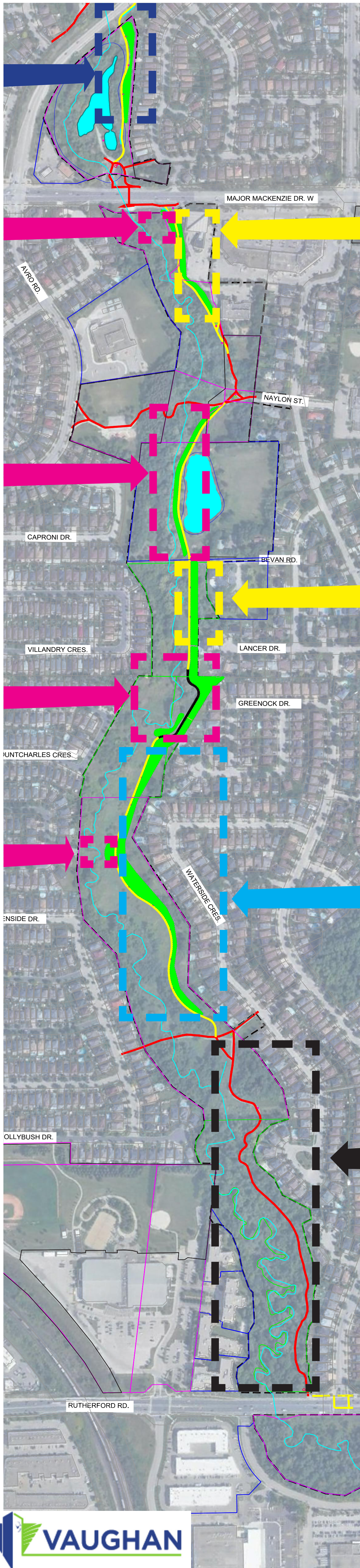
## Type 4 - Wet Condition Tolerant Shrub Species

### Application:

- Locations between the trail and creek
- Low-lying wetland areas
- For the creation, restoration, and improvement of the habitat



# Landscape Buffers & Rehabilitation Key Map



Type #3 - Robust Buffer Planting

Type #4 - River Valley Restoration Planting

Type #4 - River Valley Restoration Planting

Type #4 - River Valley Restoration Planting

Type #4 - River Valley Restoration Planting

Type #1 - Light Buffer Planting

Type #1 - Light Buffer Planting

Type #2 - Medium Buffer Planting

Invasive species removal and infill with understory planting

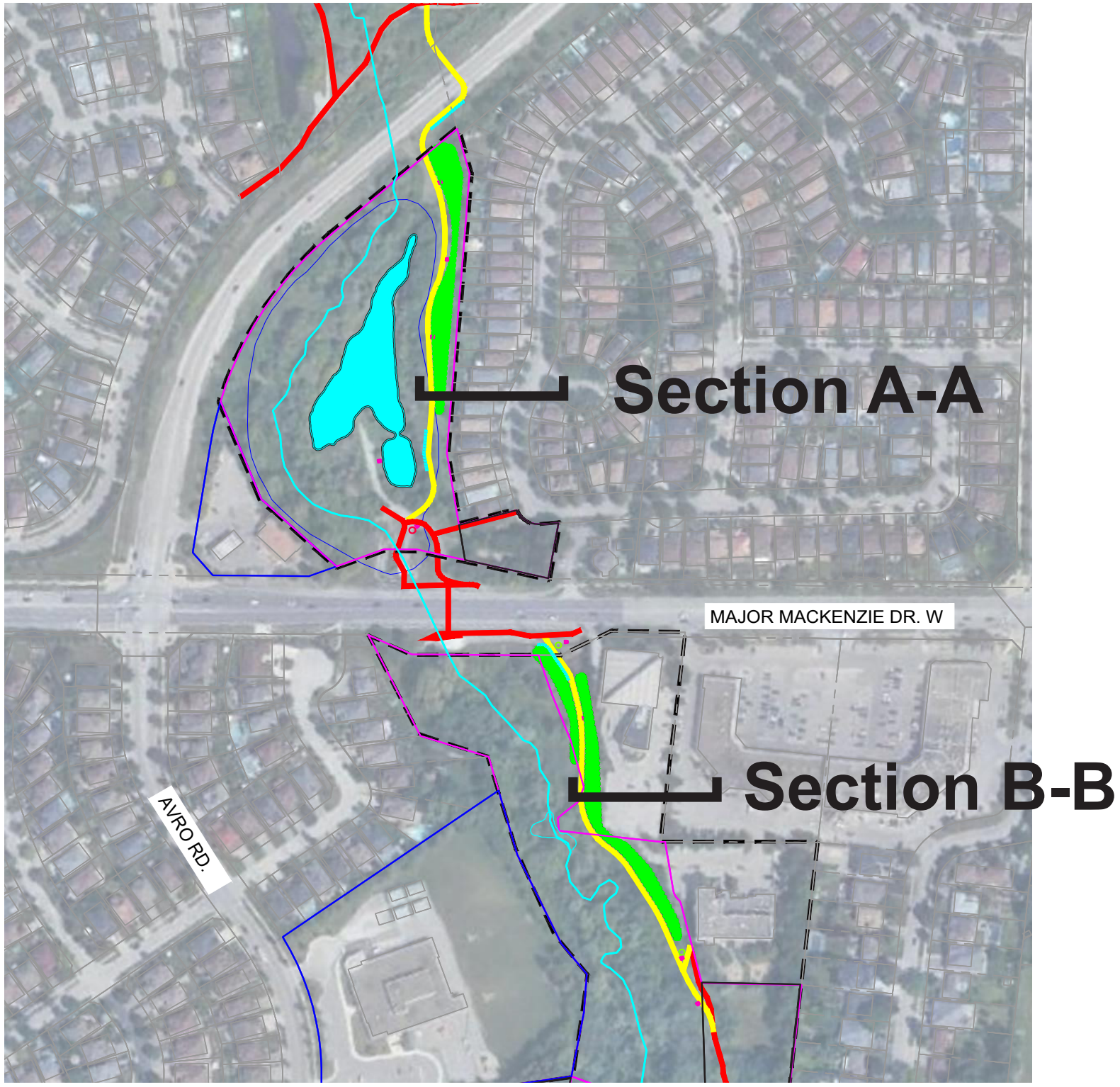
## LEGEND KEY

- SITE BOUNDARY
- EXISTING TRAIL - FACILITY (TO REMAIN)
- - - EXISTING TRAIL - (UPGRADE TO 3m ASPHALT)
- PROPOSED NEW TRAIL - (3m WIDE ASPHALT)
- - - RUTHERFORD ROAD ACTIVE TRANSPORTATION FACILITY (INSTALLATION IN PROGRESS)
- TRCA PROPERTY
- CITY OF VAUGHAN PROPERTY
- PRIVATE PROPERTY
- PROPOSED SEATING NODE
- PROPOSED TRAIL HEAD MAP
- PROPOSED MINOR WAYFINDING SIGNAGE
- DON RIVER WEST BRANCH
- TRCA 100 YEAR FLOODLINE
- PROPOSED PLANTING
- WATER BODY
- STORMWATER MANAGEMENT POND
- PARKS

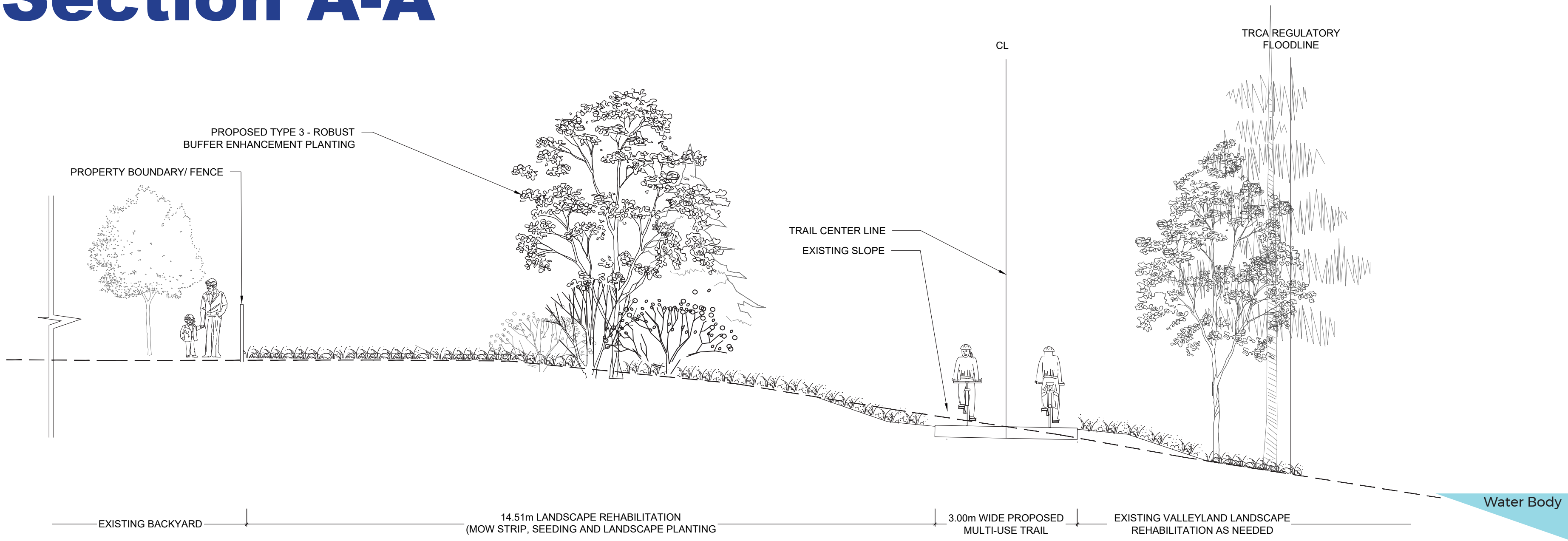


# Trail Cross Sections

## Key Map



## Section A-A



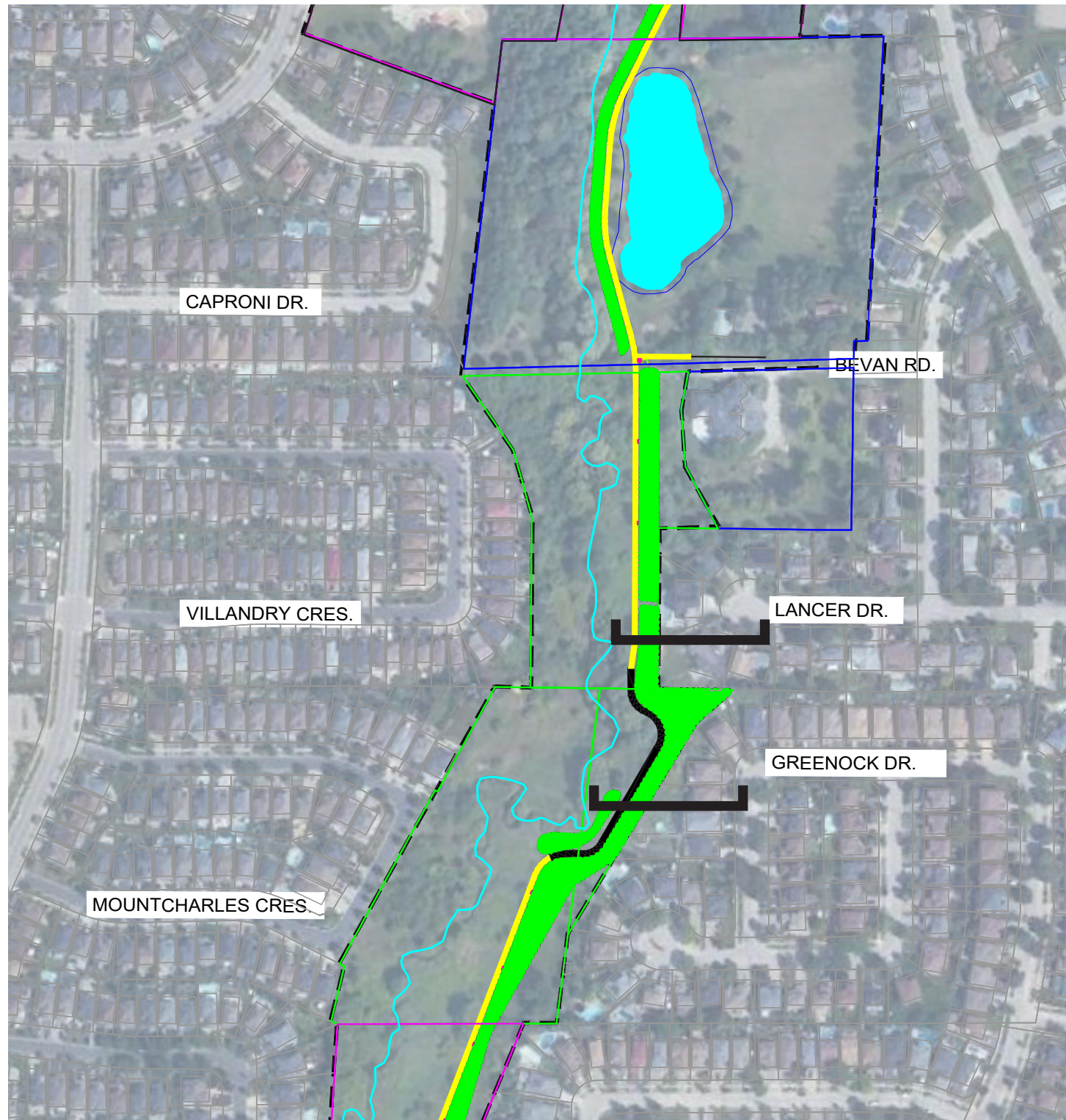
## Section B-B





# Trail Cross Sections

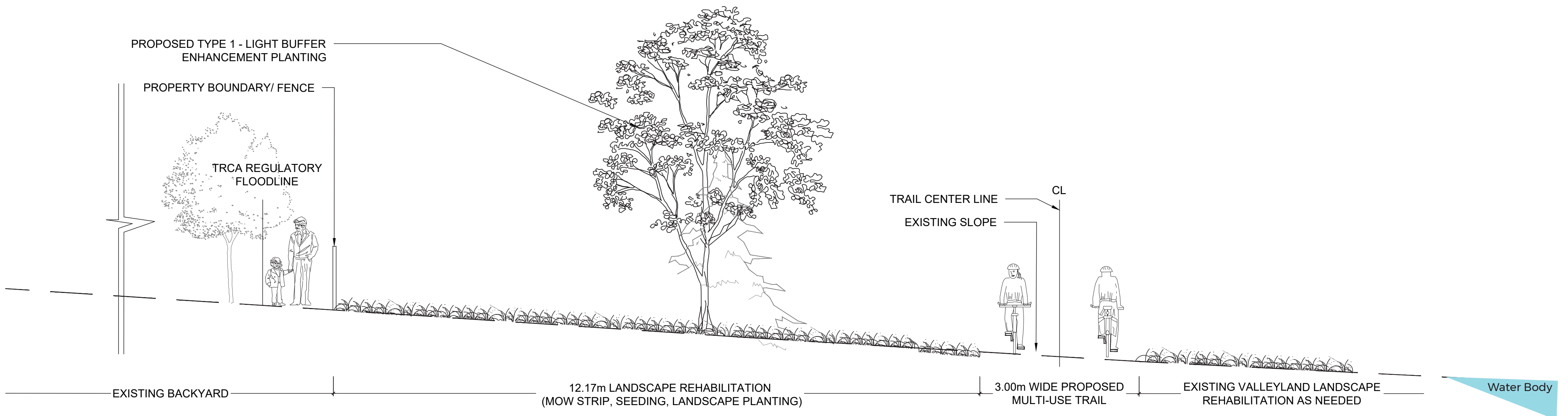
## Key Map



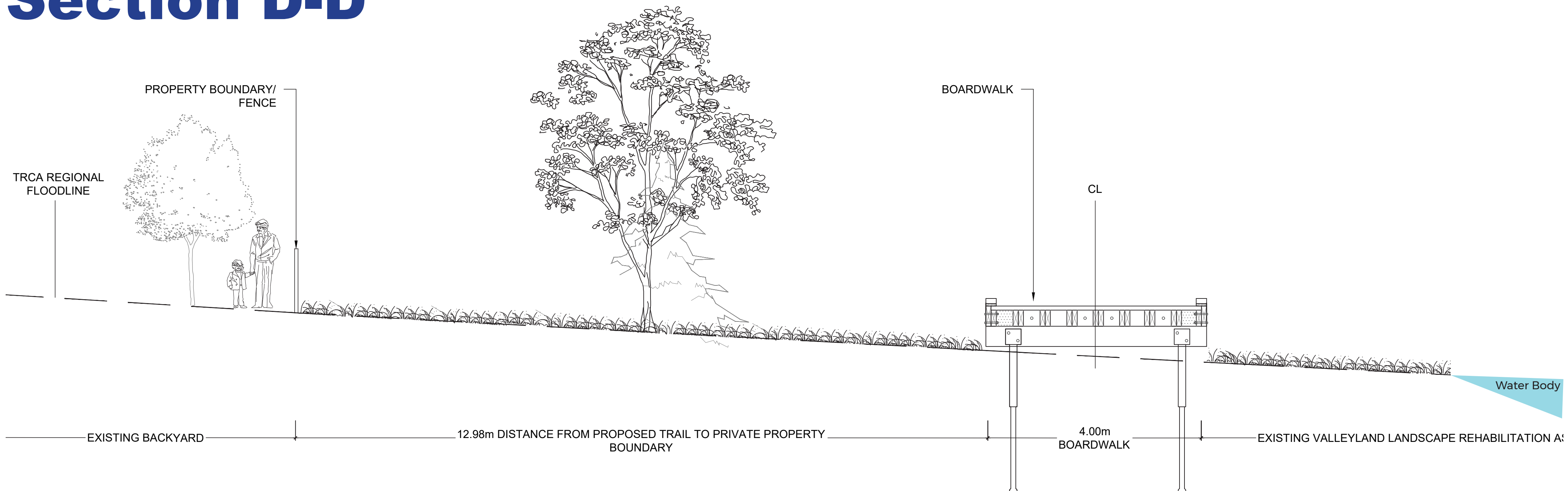
Section C-C

Section D-D

## Section C-C



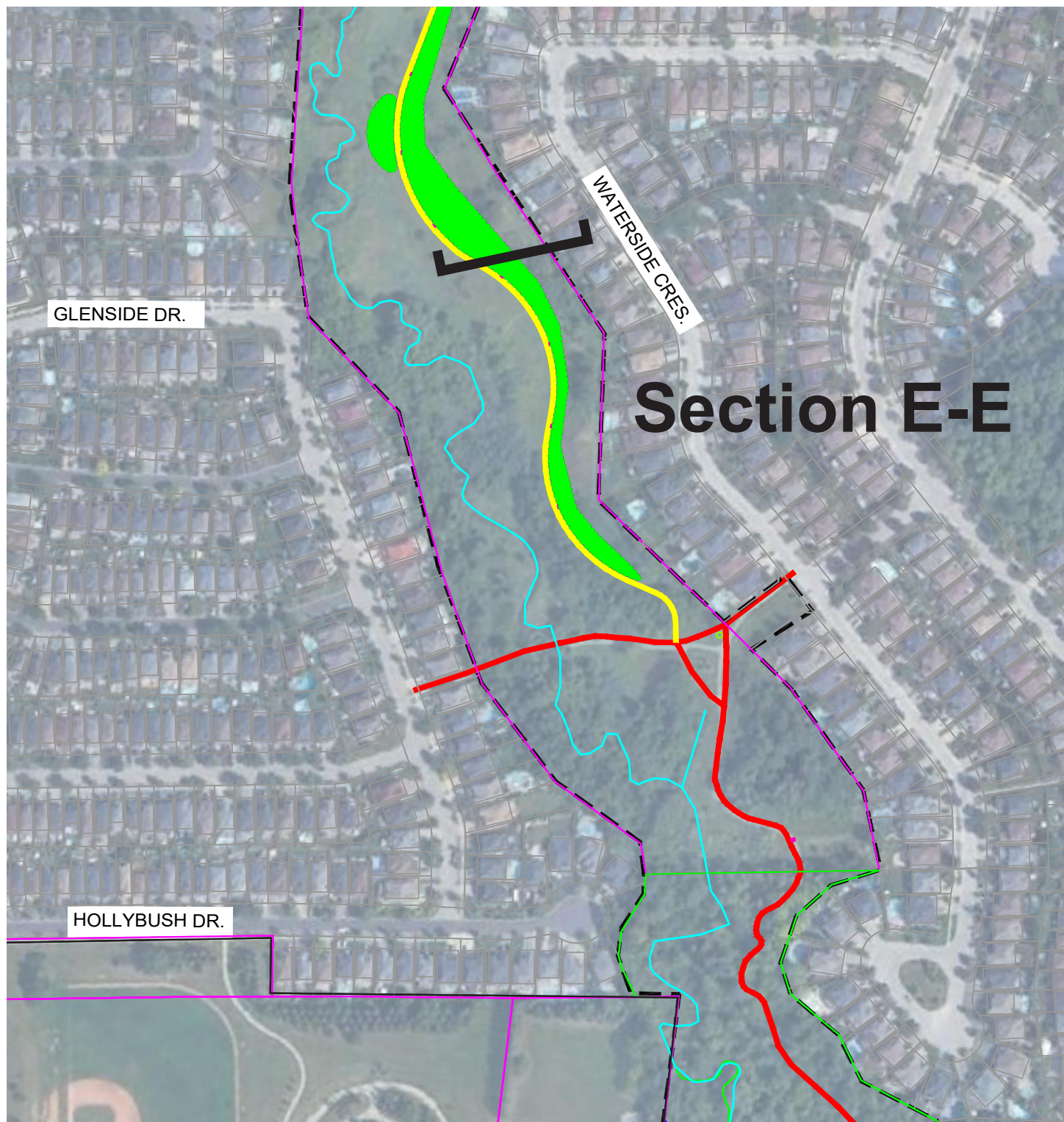
## Section D-D





# Trail Cross Sections

## Key Map



## Section E-E

